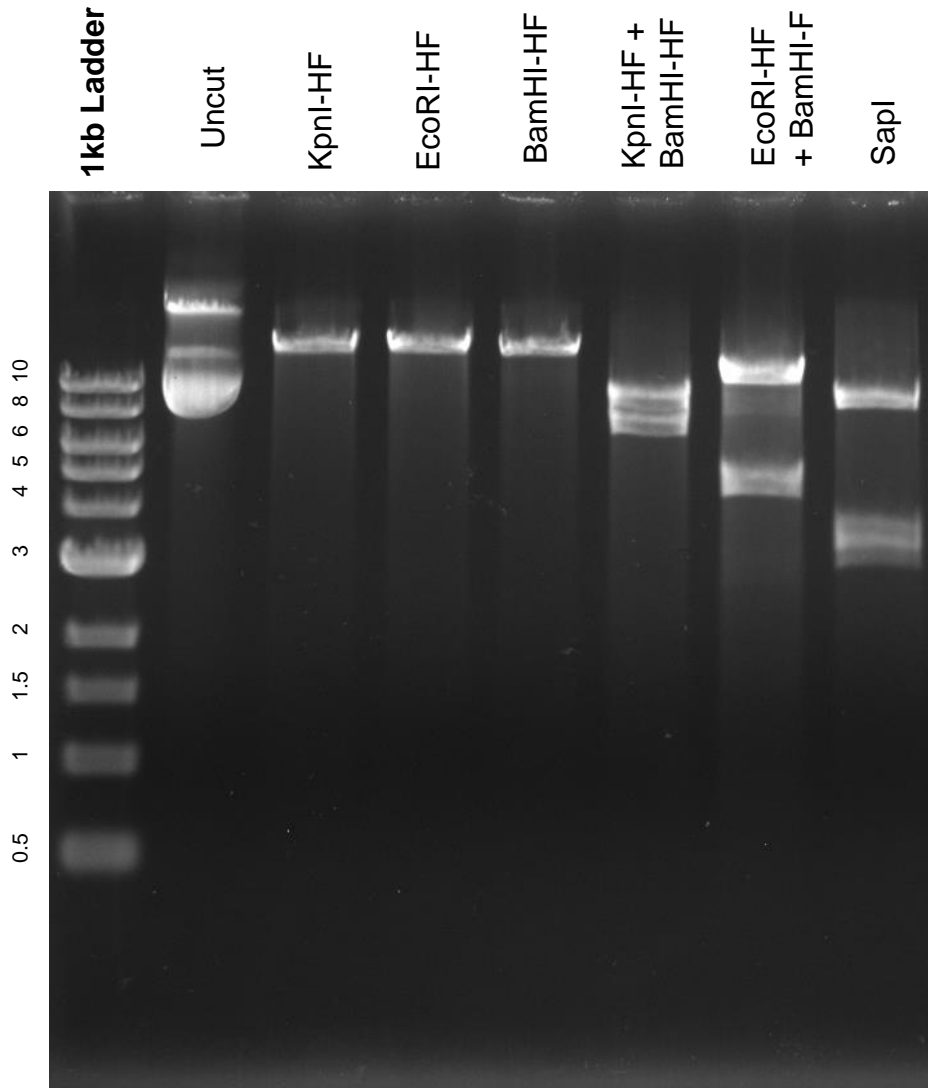


This gel depicts the NEB 1kb ladder and a digestion of the plasmid 52961 with the following enzymes: KpnI-HF, EcoRI-HF, BamHI-HF, KpnI-HF + BamHI-HF, EcoRI-HF + BamHI-HF, Sapl

**52961**

**lentiCRISPR v2**



DNA digested with KpnI-HF, EcoRI-HF, BamHI-HF, and Sapl single digests, and KpnI-HF + BamHI-HF, EcoRI-HF + BamHI-HF, double digests for **2.5 hours**  
Gel: 0.8% TAE stained with 100 ml 1X TAE and 5uL of ethidium bromide  
Ran for 2 hours at **47** volts