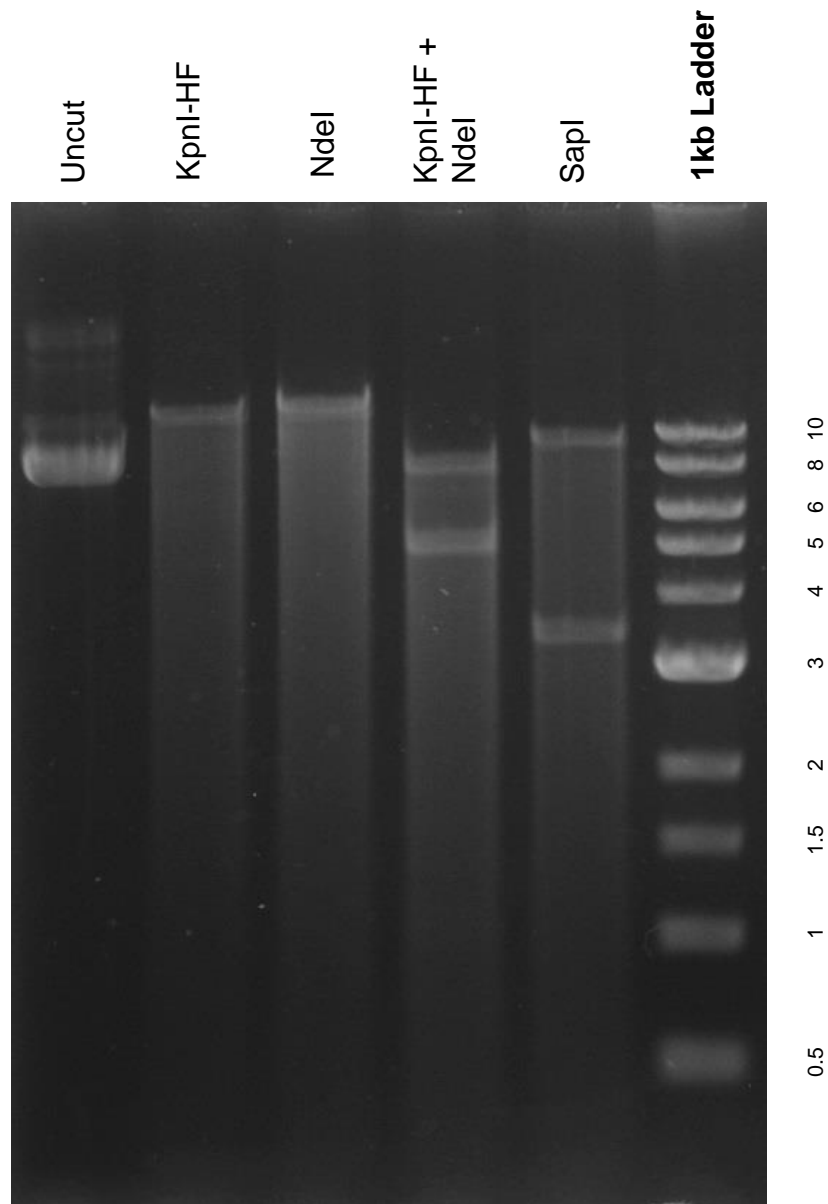


This gel depicts the NEB 1kb ladder and a digestion of the plasmid 52962 with the following enzymes: KpnI-HF, NdeI, and SapI

Plasmid # 52962 lentiCas9-Blast



DNA digested with KpnI-HF, NdeI, and SapI single digest and KpnI-HF + NdeI double digest for **overnight**

Gel: 0.8% TAE stained with 100 ml 1X TAE and 5uL of ethidium bromide

Ran for 2 hours at **47** volts