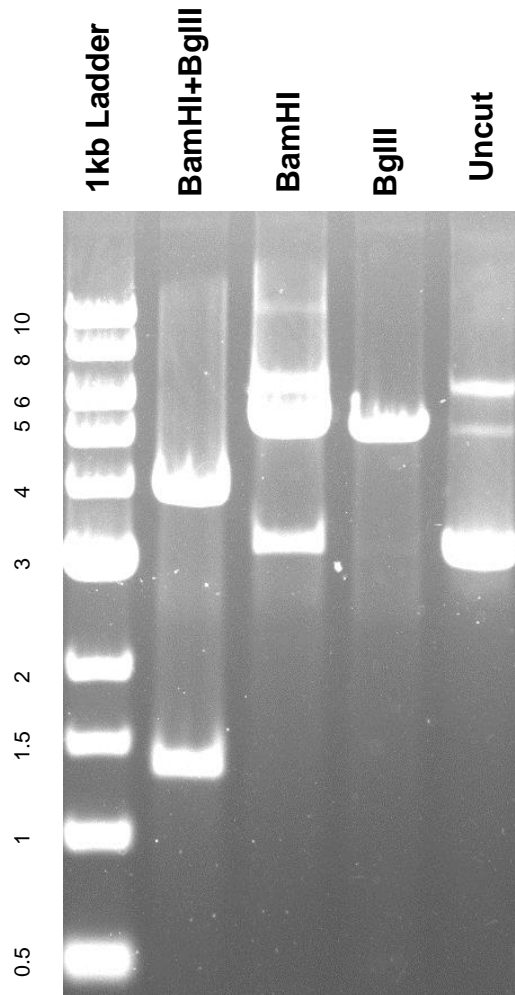


This gel depicts the NEB 1kb ladder and a digestion of the plasmid 52984: [Pcr4-12xMBS-PBS](#) with the following enzymes: BgIII, BamHI, BamHI + BgIII

Plasmid 52984
[Pcr4-12xMBS-PBS](#)



DNA digested with BgIII, BamHI single digests and BgIII+BamHI double digest for **2 hours**

Gel: 0.8% TAE stained with 100 ml 1X TAE and 5uL of ethidium bromide
Ran for 3 hours at **46** volts