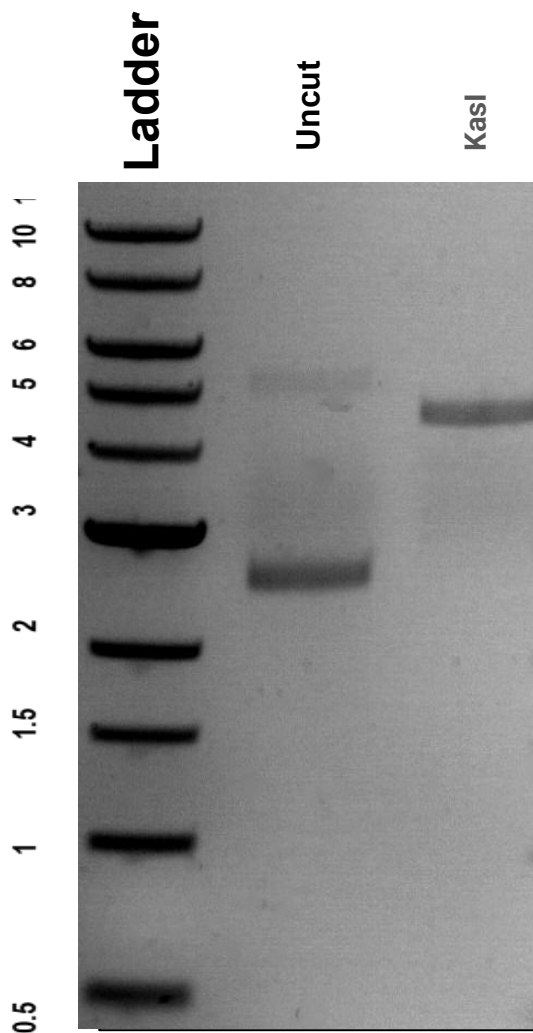


This gel depicts the NEB 1 kb Ladder and a digestion of the plasmid 54767 with the following enzyme(s): **KasI**

Plasmid #54767

mEGFP-N1



DNA digested with **KasI** single digest for **1 hour**. Gel: **0.8%** agarose stained SYBR Safe. Ran for **1.15** hours at **100** volts.