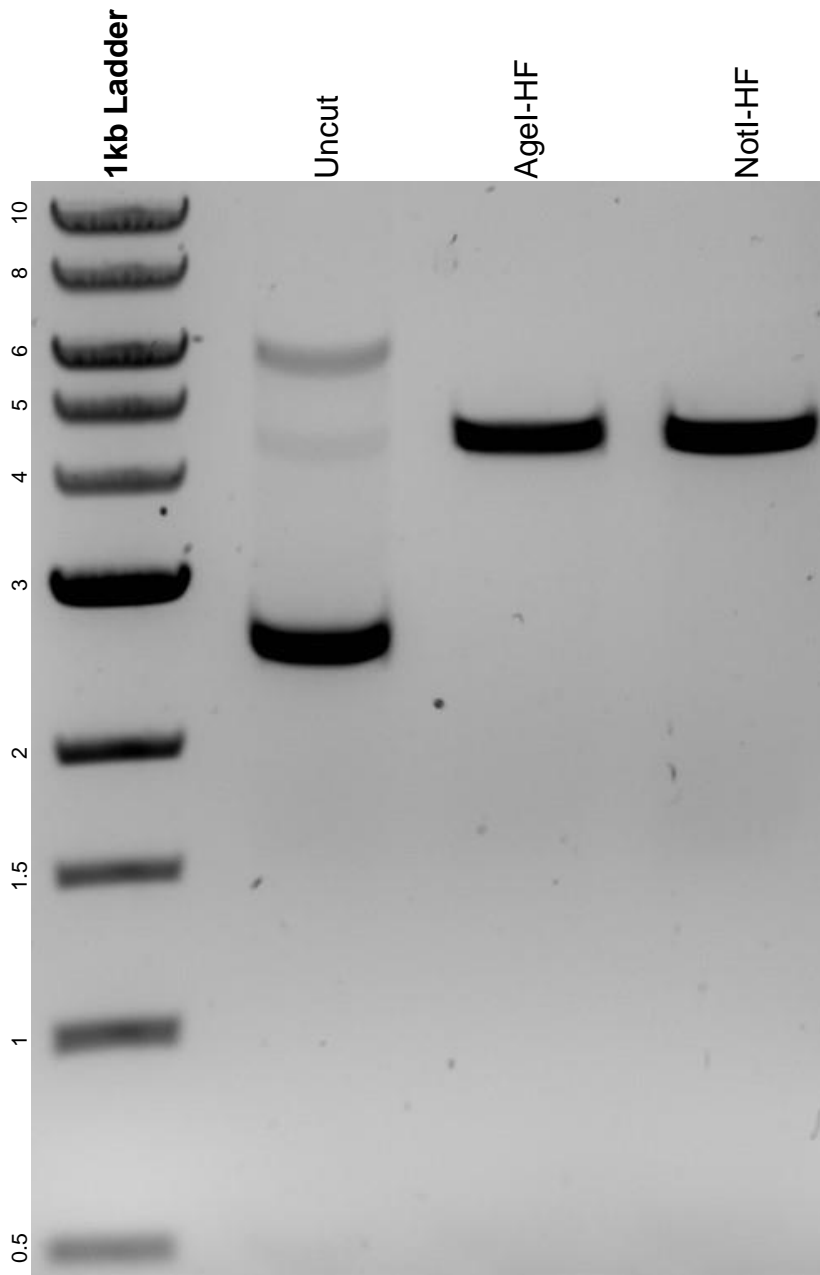


This gel depicts the NEB 1kb ladder and a digestion of the plasmid LSSmKate2-N1 with the following enzymes: AgeI-HF and NotI-HF.

Plasmid 54796:
LSSmKate2-N1



DNA digested with AgeI-HF and NotI-HF single digests for **2 hours**.
Gel: 0.8% agarose stained with 5 μ L of ethidium bromide.
Ran for 1.5 hours at 100 volts.