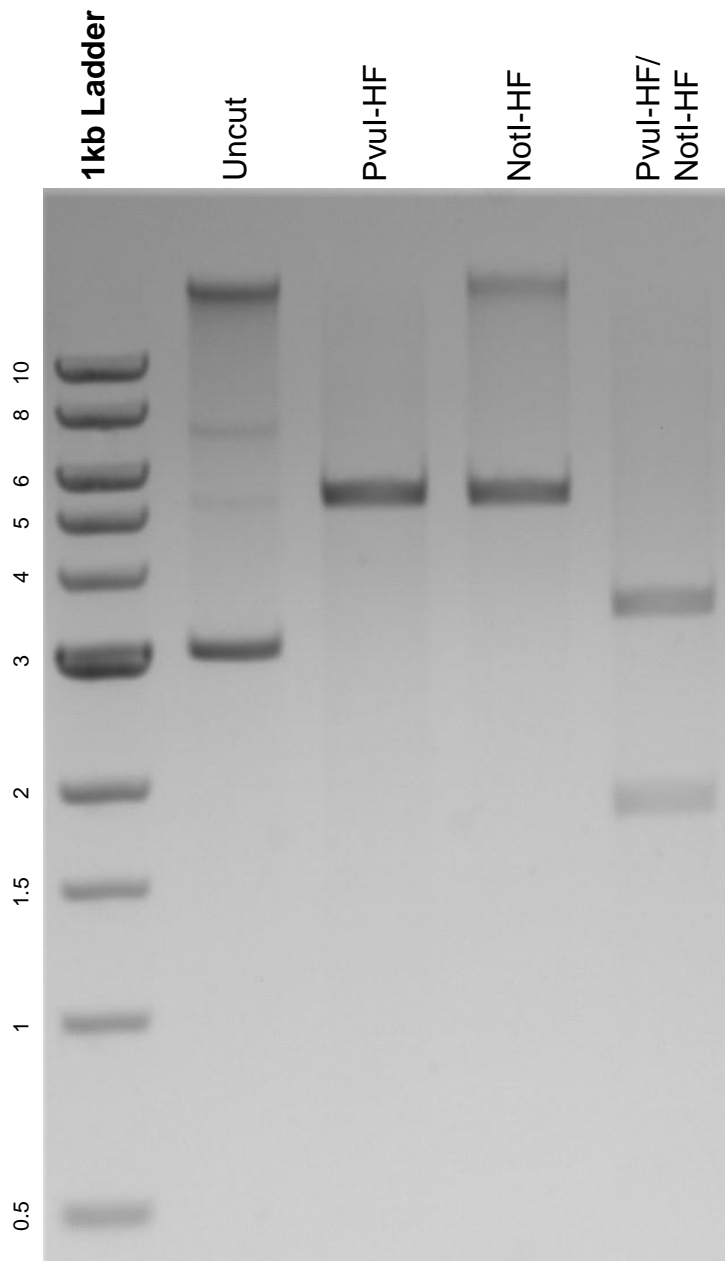


This gel depicts the NEB 1kb ladder and a digestion of the plasmid Cer(1-158)-gamma-5 in pcDNA1/Amp with the following enzymes: PvuI-HF and NotI-HF.

### Plasmid 55625:

Cer(1-158)-gamma-5 in pcDNA1/Amp



DNA digested with PvuI-HF and NotI-HF single digests and PvuI-HF/ NotI-HF double digest for **2 hours**.

Gel: 0.8% agarose stained with 5 uL of ethidium bromide.

Ran for 1.5 hours at 100 volts.