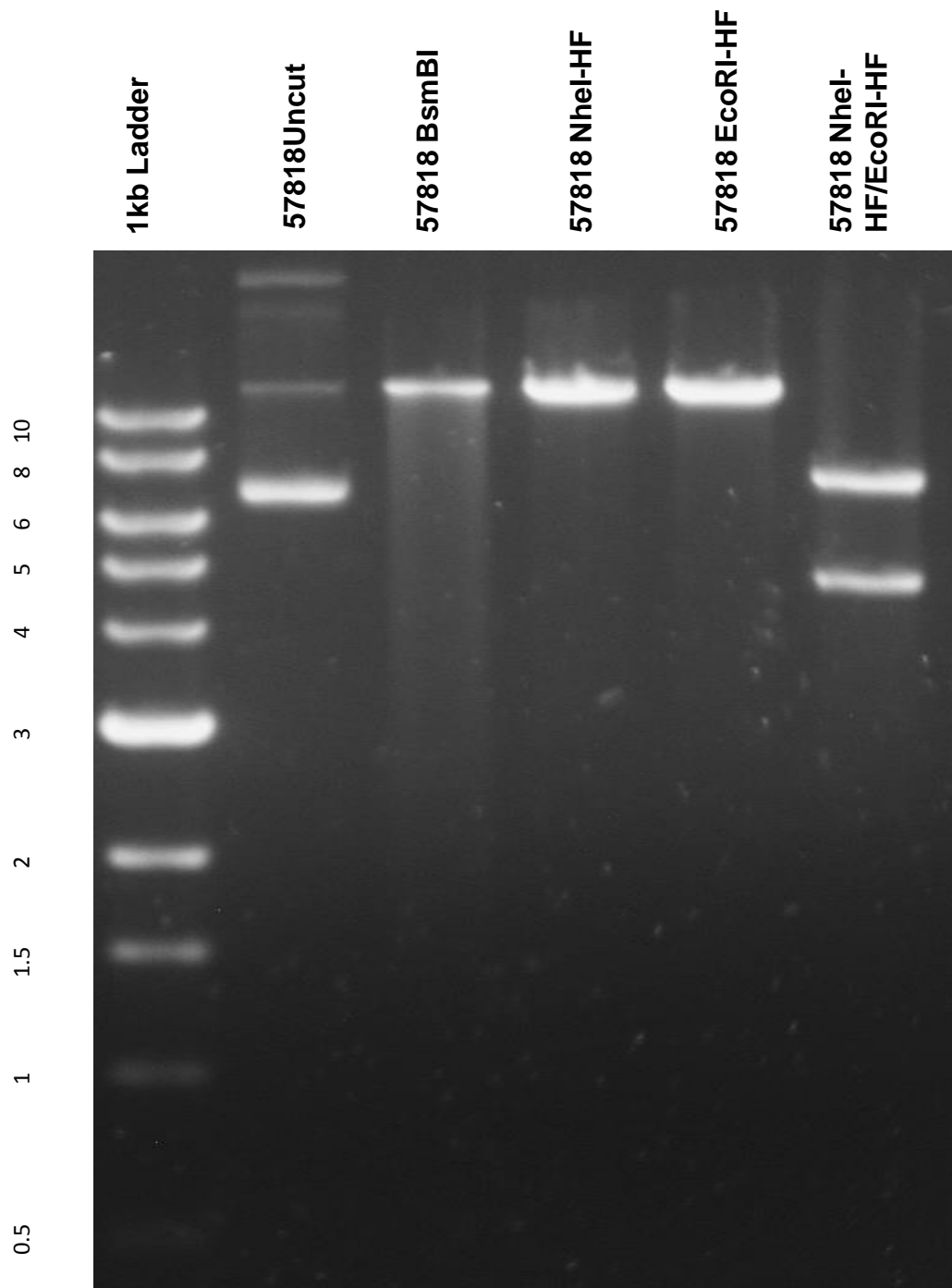


This gel depicts the NEB 1kb ladder and a digestion of the plasmid 57818 with the following enzymes: BsmBI, NheI-HF, EcoRI-HF, and NheI-HF/EcoRI-HF double digest.

### Plasmid 57818: pL-CRISPR.EFS.GFP



DNA digested with: : BsmBI, NheI-HF, EcoRI-HF, and NheI-HF/EcoRI-HF double digest for **2 hours**.  
Gel: 0.8% TAE with 0.2% ethidium bromide.  
Ran for 5 hours at **47** volts.