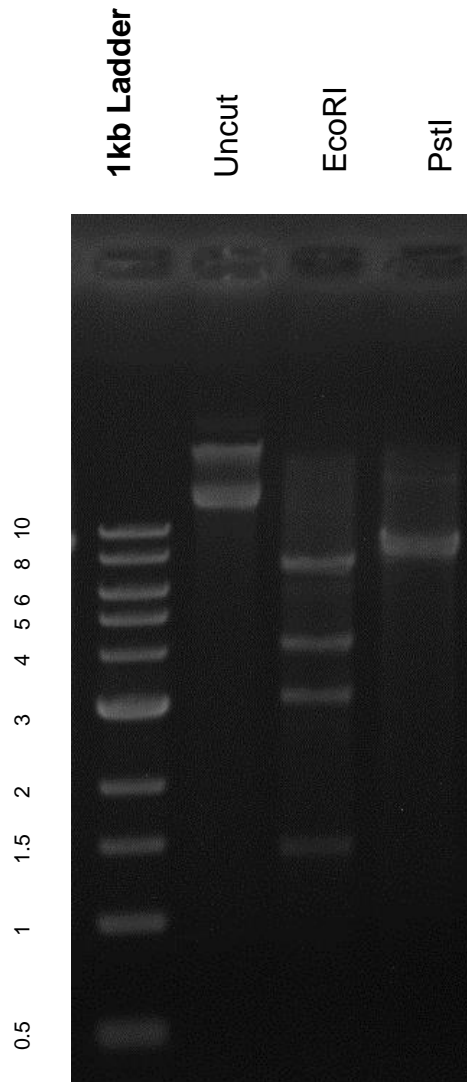


This gel depicts the NEB 1kb ladder and a digestion of the plasmid pRL528 with the following enzymes: EcoRI HF and PstI

Plasmid 58495
pRL528



DNA digested with EcoRI HF and PstI, single digests for **2 hours**
Gel: 0.8% TAE stained with 100 ml 1X TAE and 5uL of ethidium bromide
Ran for 1.5 hours at 72 volts