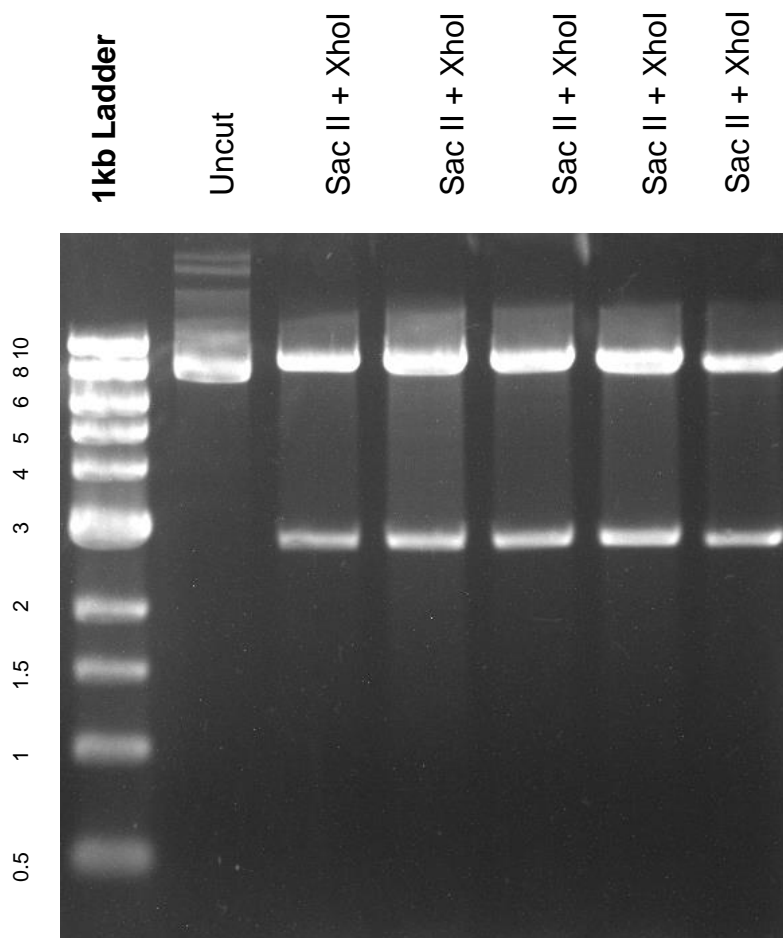


This gel depicts the NEB 1kb ladder and a digestion of the plasmid 58505 with the following enzymes: SacII + XhoI

Plasmid 58505 pLacO-ISce1



DNA digested with SacII + XhoI double digest for **2.0 hours**

Gel: 0.8% TAE stained with 100 ml 1X TAE and 5uL of ethidium bromide

Ran for 2.5 hours at **47 volts**