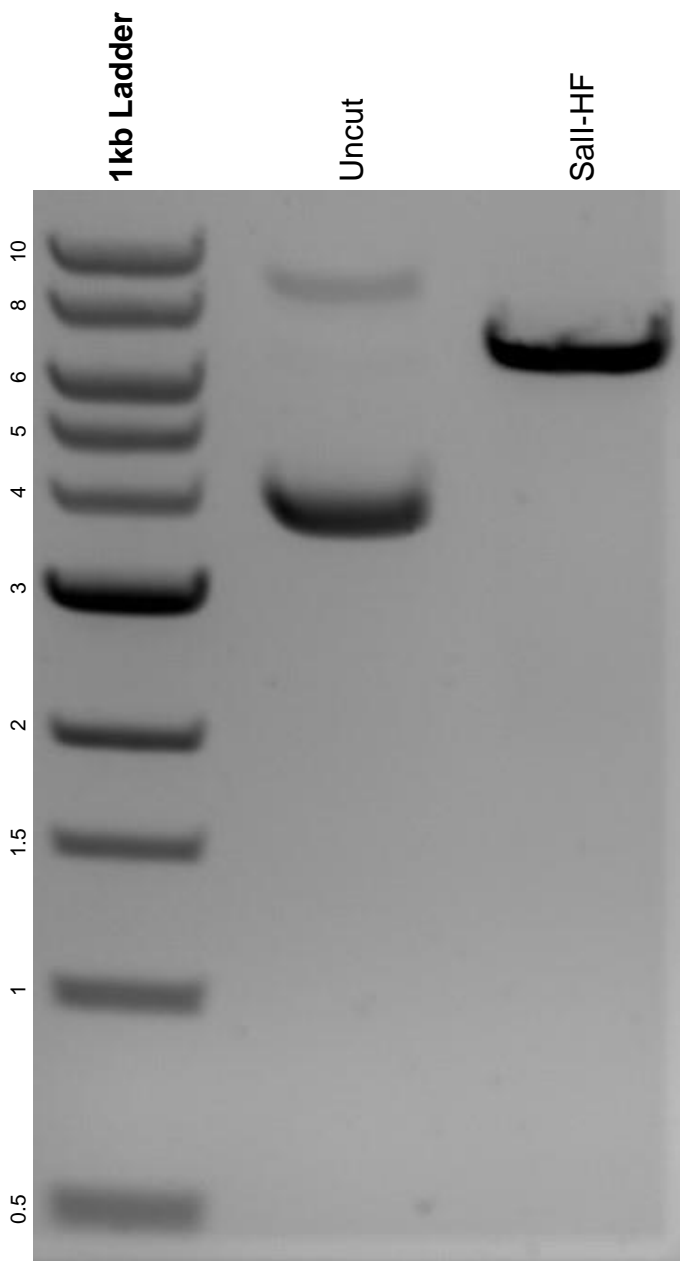


This gel depicts the NEB 1kb ladder and a digestion of the plasmid pAAV-mCherry-flex-dtA with the following enzymes: Sall-HF.

**Plasmid 58536:**  
pAAV-mCherry-flex-dtA



DNA digested with Sall-HF single digest for **2 hours**.  
Gel: 0.8% agarose stained with 6 uL of ethidium bromide.  
Ran for 1.5 hours at 100 volts.