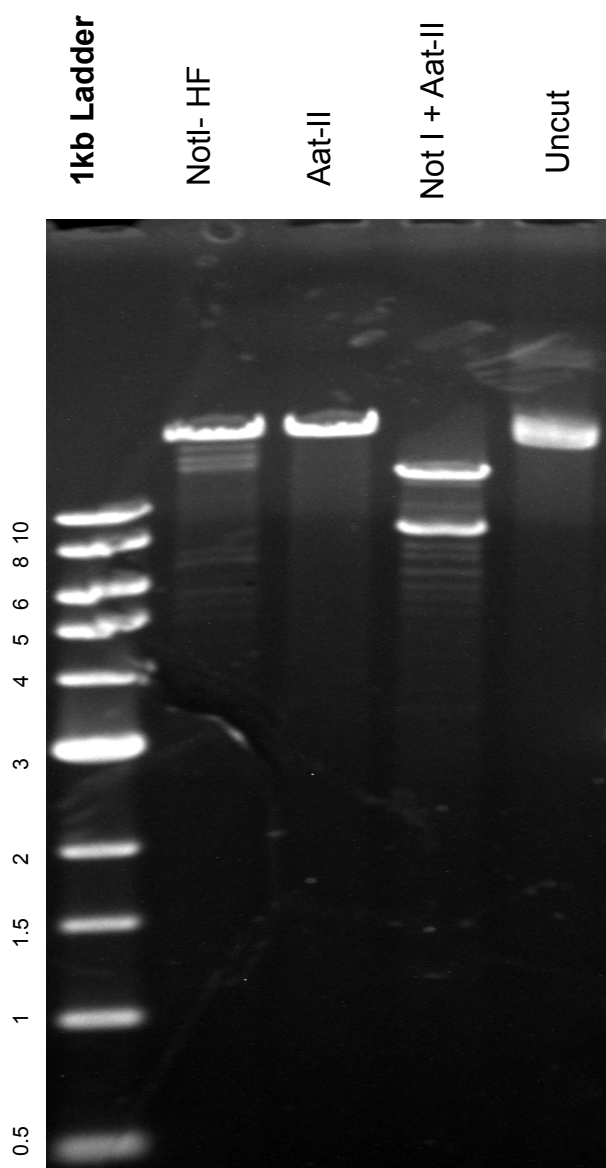


This gel depicts the NEB 1kb ladder and a digestion of the plasmid 58799 with the following enzymes: AatII. NotI-HF, NotIHF + AatII

**Plasmid 58799**  
**p(+ )MV-NSE-FlagrP-3g\_haP-F497A-3p**



DNA digested with NotI-HF single , AatII single, and NotI-HF + AatII double digest for **2 hours**

Gel: 0.8% TAE stained with 100 ml 1X TAE and 5uL of ethidium bromide

Ran for 1 hour at **47** volts and 2 hours at 70 volts