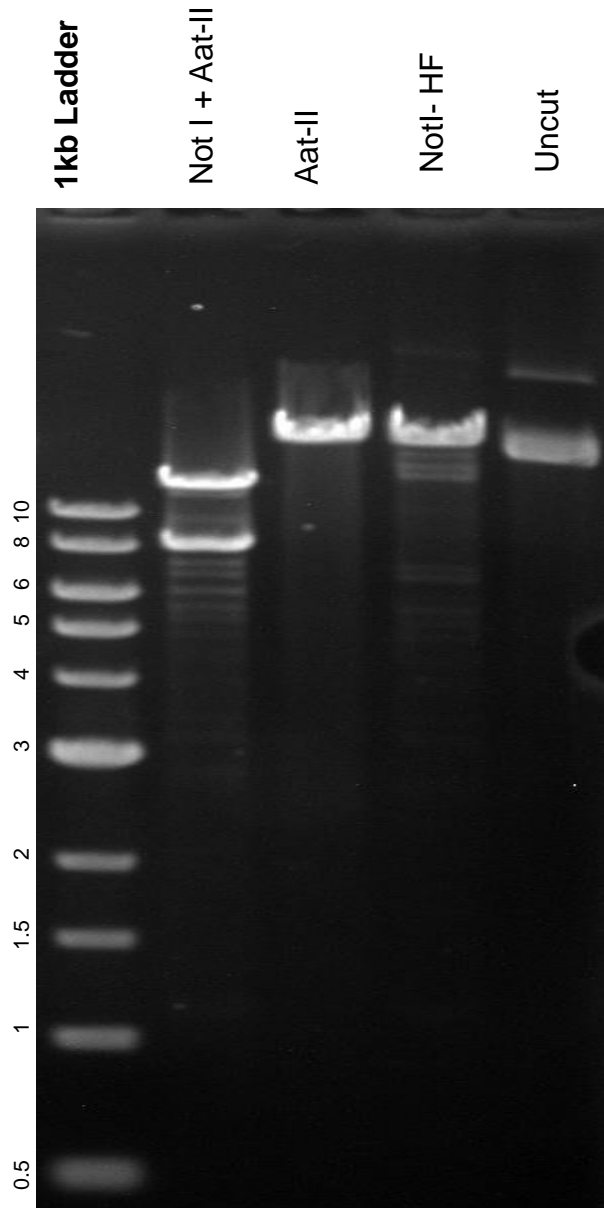


This gel depicts the NEB 1kb ladder and a digestion of the plasmid 58800 with the following enzymes: AatII. NotI-HF, NotIHF + AatII

Plasmid 58800
p(+)*MV-NSE-FlagrP-3g_haP-F497D-3p*



DNA digested with NotI-HF single , AatII single, and NotI-HF + AatII double digest for **2 hours**

Gel: 0.8% TAE stained with 100 ml 1X TAE and 5uL of ethidium bromide
Ran for 1 hour at **47** volts and 2 hours at 70 volts