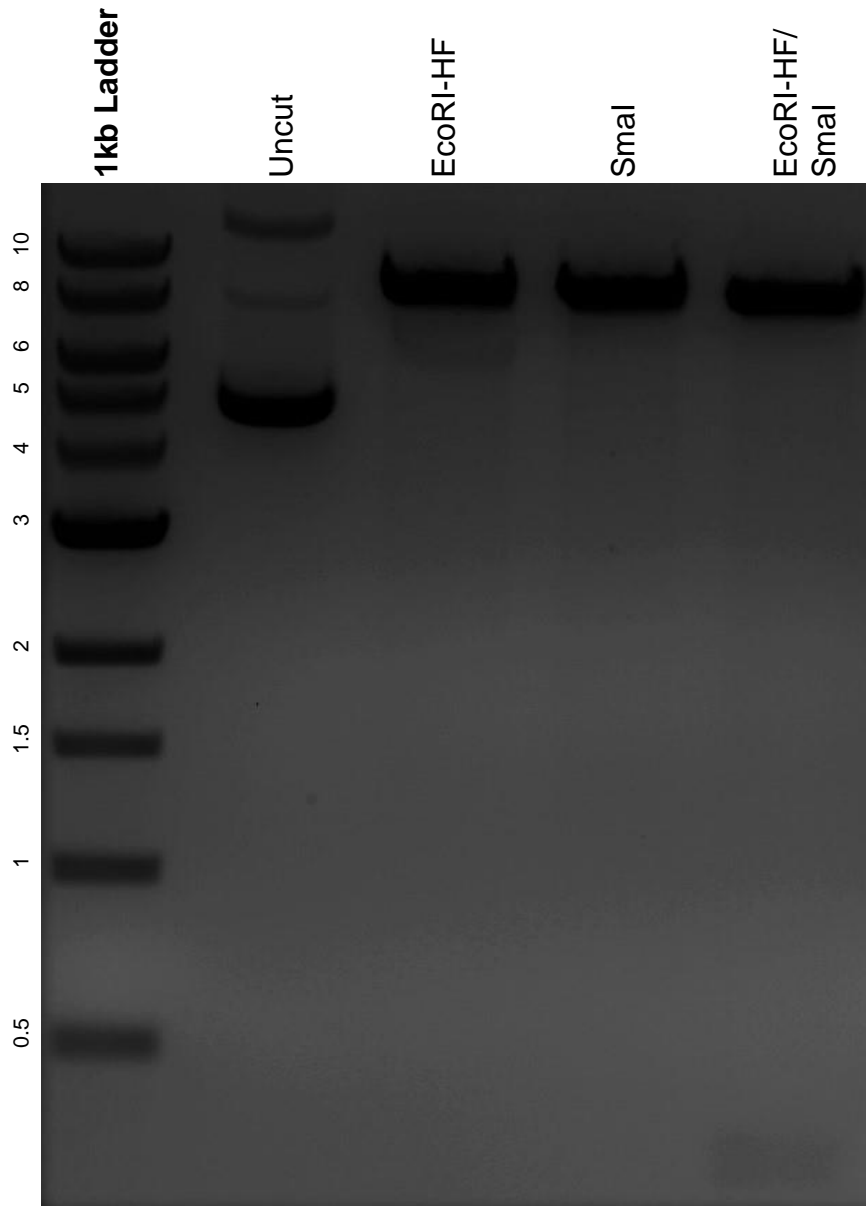


This gel depicts the NEB 1kb ladder and a digestion of the plasmid AAVS1-TALEN-L with the following enzymes: EcoRI-HF and SmaI.

**Plasmid 59025:  
AAVS1-TALEN-L**



DNA digested with EcoRI-HF and SmaI single digests and EcoRI-HF/ SmaI double digest for **2 hours**.

Gel: 0.8% agarose stained with 6 uL of ethidium bromide.

Ran for 1.5 hours at 100 volts.