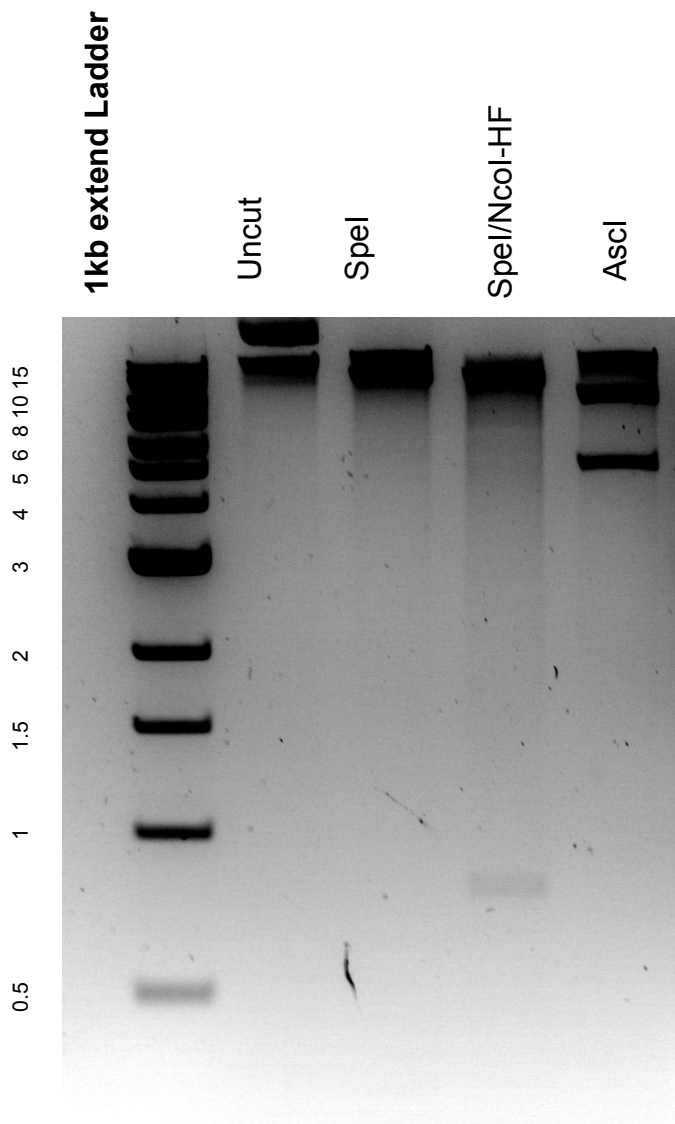


This gel depicts the NEB 1kb extend DNA ladder and a digestion of the plasmid p201G Cas9 with the following enzymes: SpeI, NcoI-HF, and Ascl.

**Plasmid #: 59178**  
**p201G Cas9**



DNA digested with SpeI single digest, SpeI/NcoI-HF double digest, and Ascl single digest for **2 hours**.

Gel: 1.2% agarose stained with 8 uL of ethidium bromide.

Ran for 3.5 hours at 80 volts.