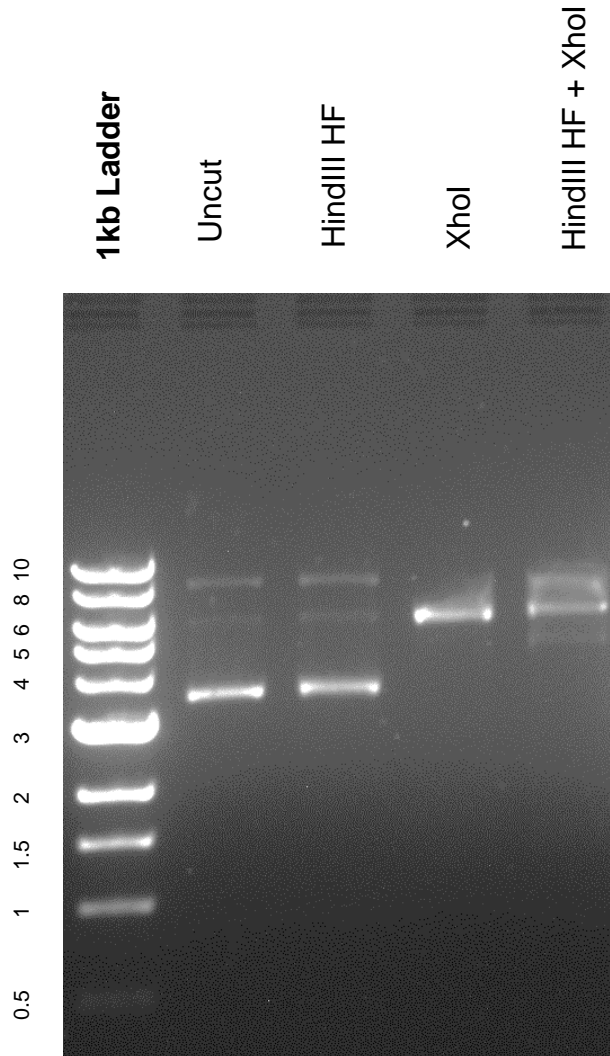


This gel depicts the NEB 1kb ladder and a digestion of the plasmid MC177VSG221RNAi with the following enzymes: HindIII HF, XhoI and HindIII HF + XhoI

Plasmid 59730:
MC177VSG221RNAi



DNA digested with HindIII HF, XhoI single digests and HindIII HF + XhoI double digest for **2 hours**

Gel: .8% TAE stained with 150 ml 1X TAE and 3uL of ethidium bromide

Ran for 2 hours at 70 volts