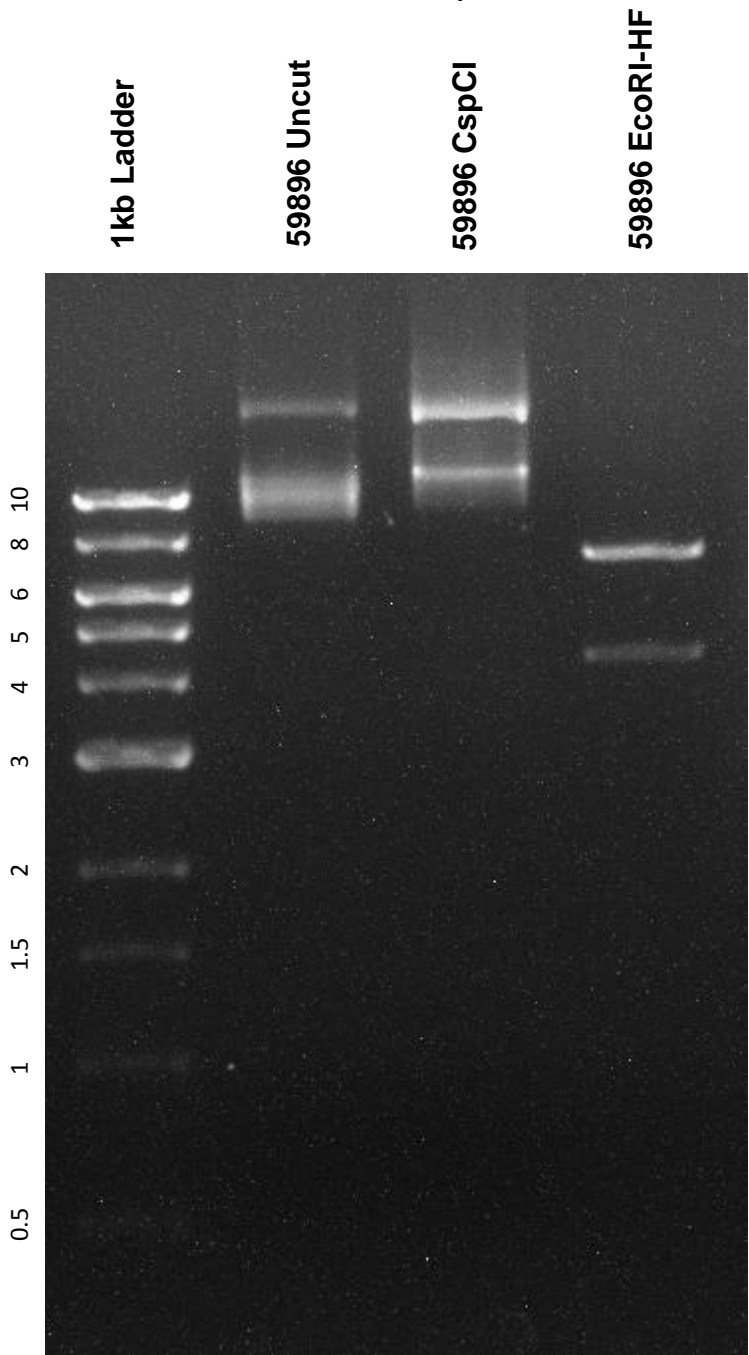


This gel depicts the NEB 1kb ladder and a digestion of plasmid 59896 with the following enzymes: CspCI and EcoRI-HF.

Plasmid 59896: pMZ374



DNA digested with CspCI and EcoRI-HF for **2 hours**.  
Gel: 0.8% TAE with 0.2% ethidium bromide.  
Run for 1 hour at **100** volts.