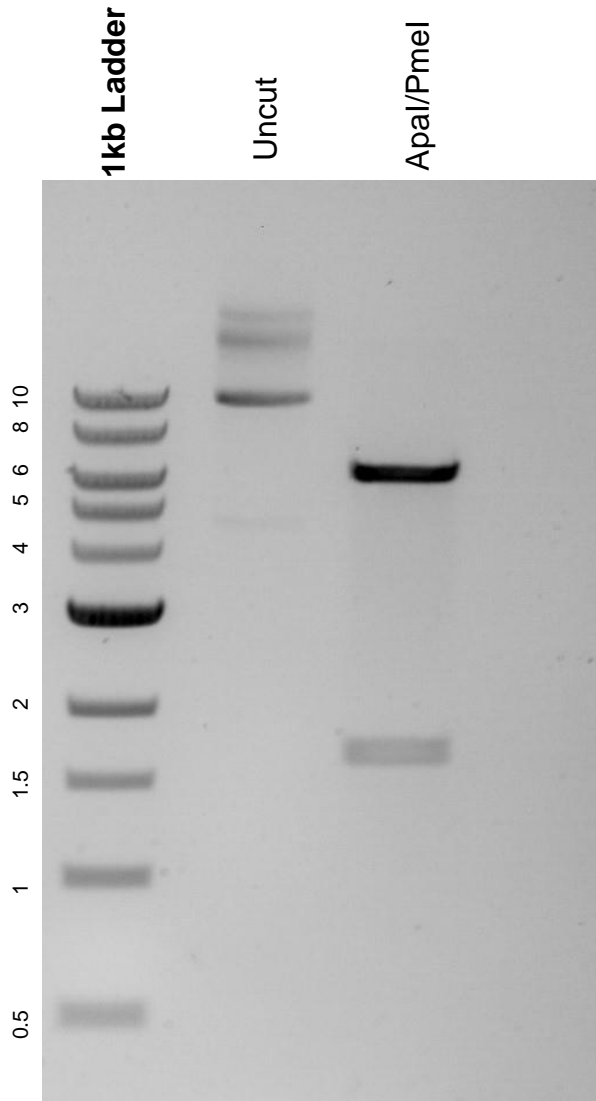


This gel depicts the NEB 1kb ladder and a digestion of the plasmid pTXB1-Tn5 with the following enzymes: Apal and Pmel

Plasmid 60240:
pTXB1-Tn5



DNA digested with Apal and Pmel double digests for **2 hours**.
Gel: 0.8% agarose stained with 5 uL of ethidium bromide.
Ran for 1.5 hours at 100 volts.