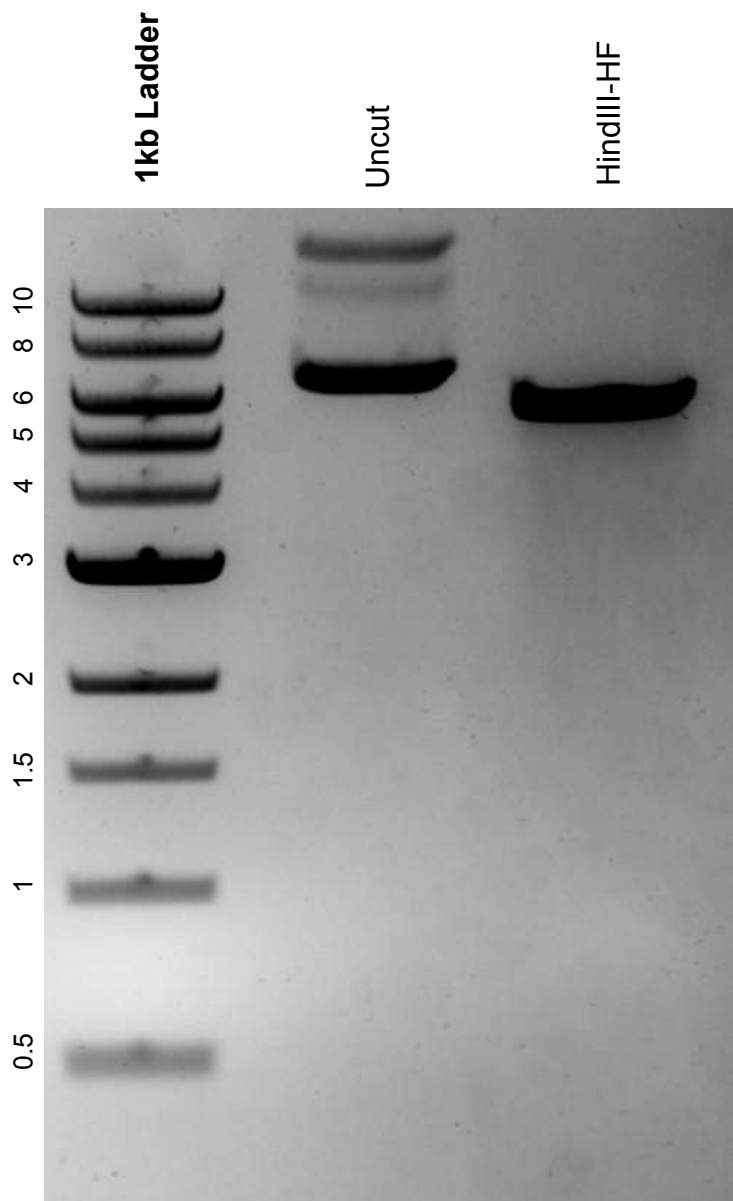


This gel depicts the NEB 1kb Ladder and a digestion of the plasmid pICE-NLS-mCherry with the following enzymes: HindIII-HF

**Plasmid 60364:**  
pICE-NLS-mCherry



DNA digested with HindIII-HF single digest for **2 hours**.  
Gel: 0.8% agarose stained with SYBR Safe.  
Ran for 1.25 hours at 100 volts.