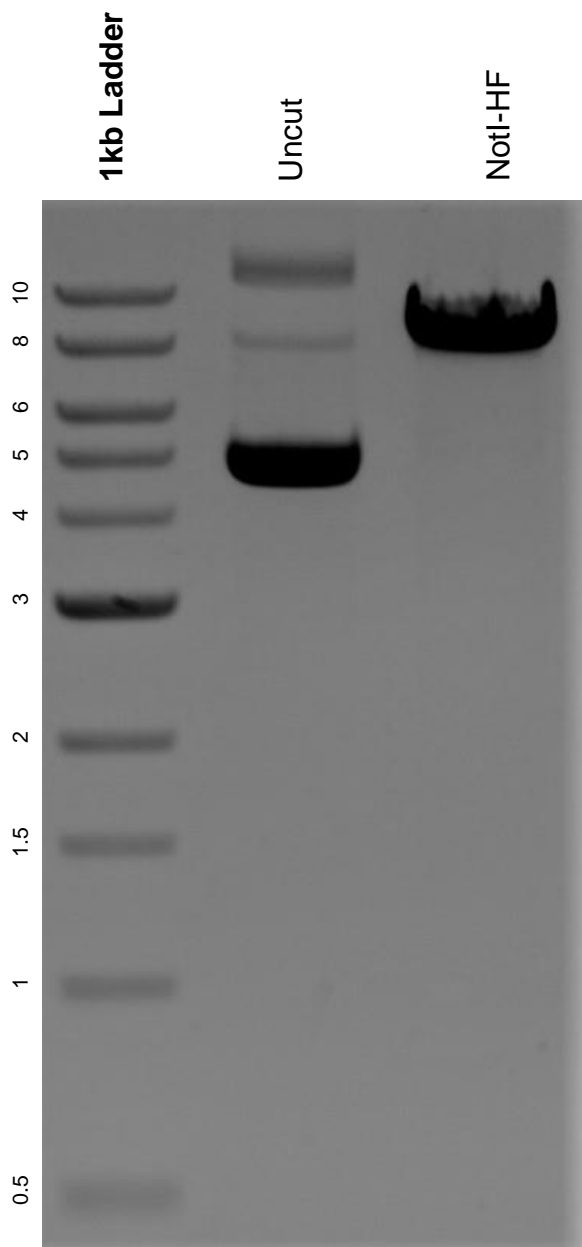


This gel depicts the NEB 1kb ladder and a digestion of the plasmid pLL7.0: Venus-iLID-CAAX (from KRas4B) with the following enzymes: NotI-HF.

Plasmid 60411:
pLL7.0: Venus-iLID-CAAX (from KRas4B)



DNA digested with NotI-HF single digest for **2 hours**.
Gel: 0.8% agarose stained with 6 uL of ethidium bromide.
Ran for 1.5 hours at 100 volts.