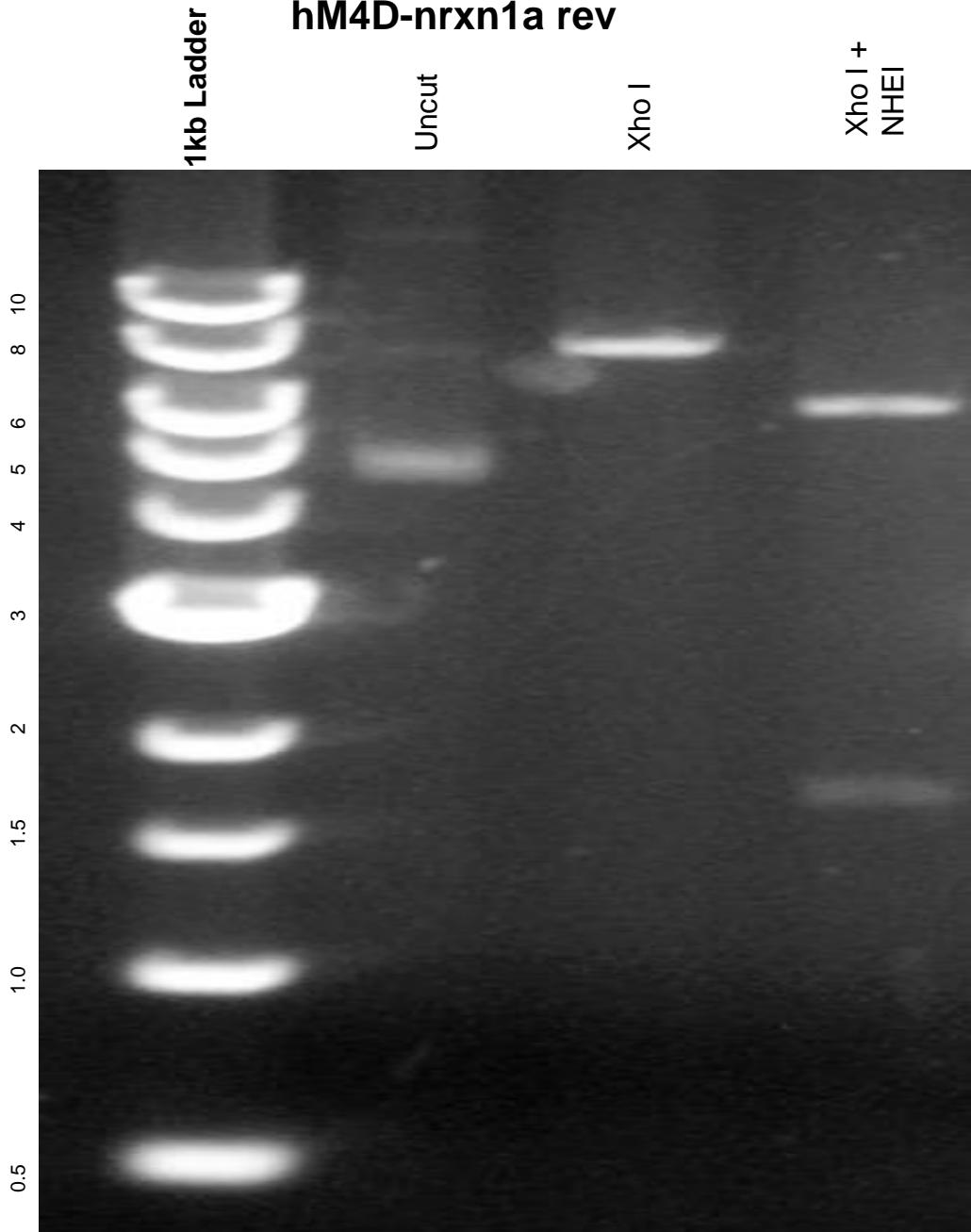


This gel depicts the NEB 1kb ladder and a digestion of the plasmid 60544 with the following enzymes: Xho I and Xho I + NHEI-HF

Plasmid 60544
AA0250-mCherry-2a-
hM4D-nrxn1a rev



DNA digested with Xho I single digest and XhoI+NHEI-HF Double digest for **2 hours**
Gel: 0.8% TAE pre-stained with 5 uL of ethidium bromide
Ran for 2.5 hours at **72** volts