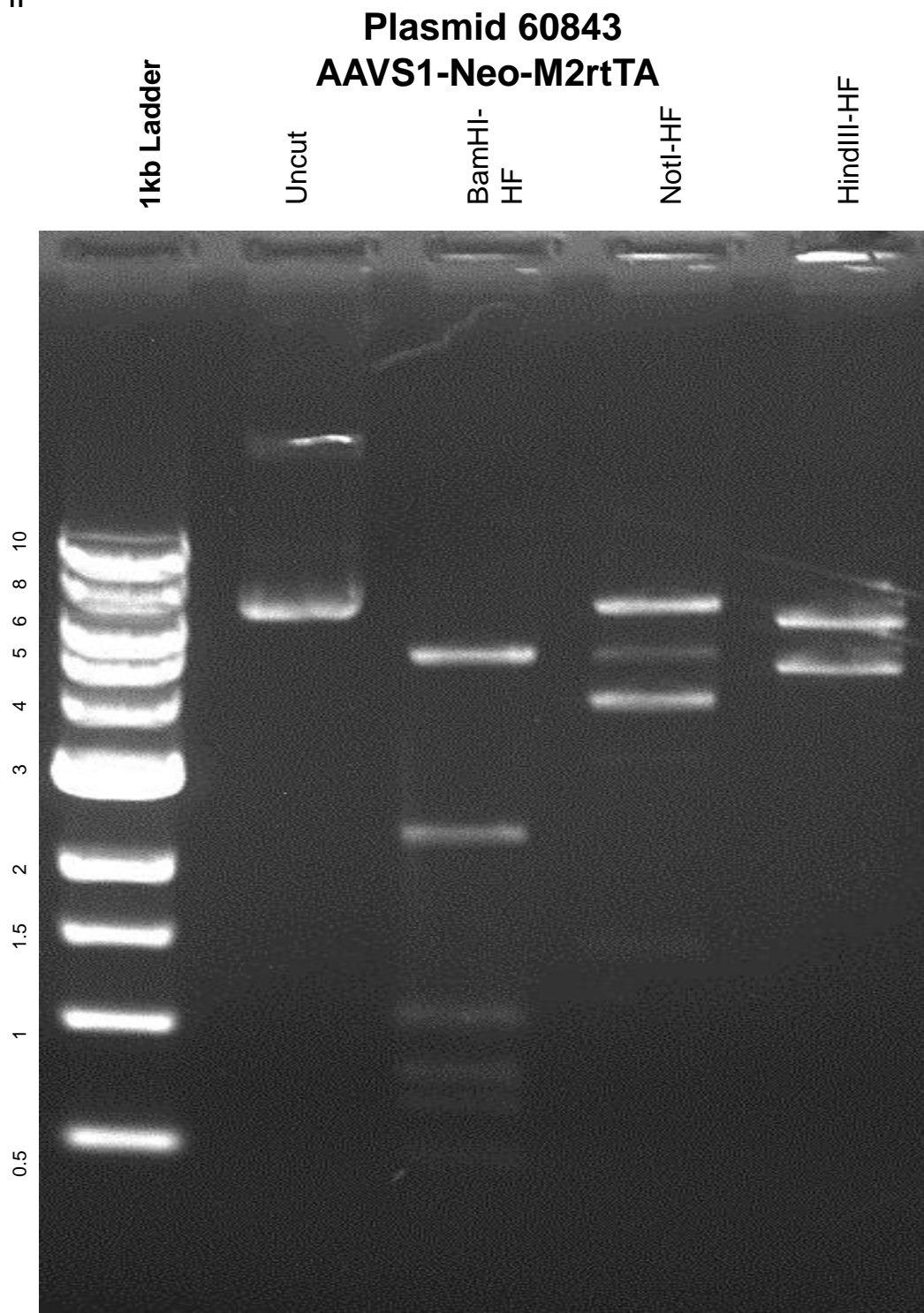


This gel depicts the NEB 1kb ladder and a digestion of the plasmid 60843 with the following enzymes: BamHI-HF, NotI-Hf, and HindIII-HF



DNA digested with BamHI-HF, HindIII-HF, Not I-HF single digest for **2 hours**
Gel: 0.8% TAE pre-stained with 3 uL of ethidium bromide
Ran for 3 hours at **47** volts