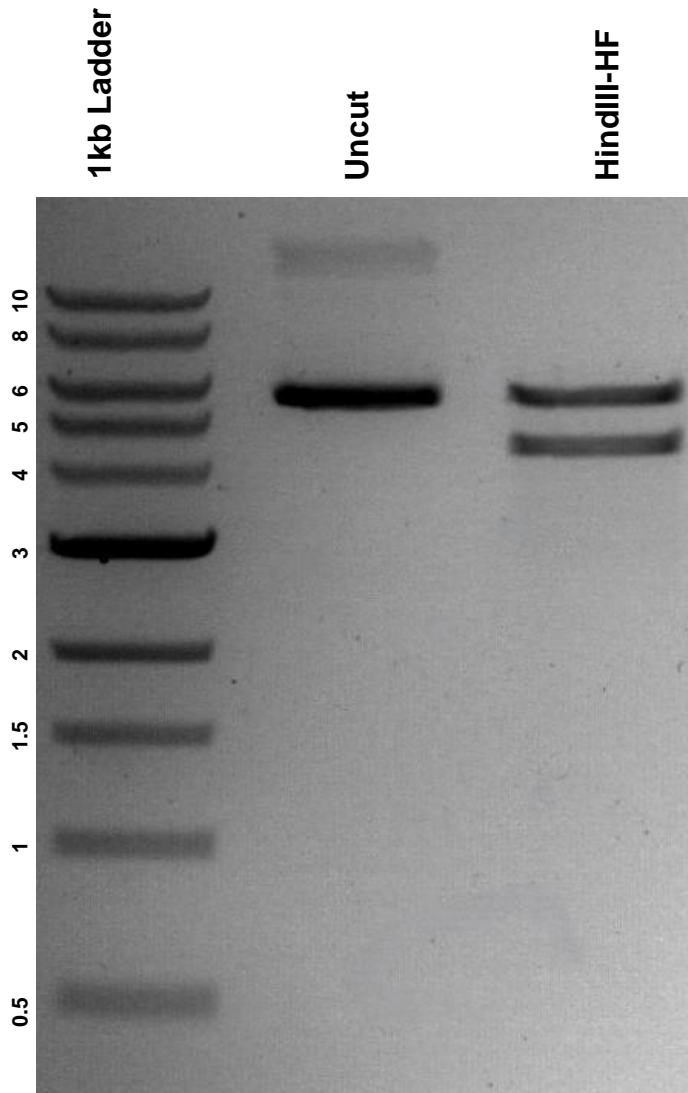


This gel depicts the NEB 1kb Ladder and a digestion of the plasmid **AAVS1-Neo-M2rtTA** with the following enzyme(s): **HindIII-HF**

Plasmid 60843
AAVS1-Neo-M2rtTA



DNA digested with **HindIII-HF** single digest for **1 hours**.
Gel: **0.8%** agarose stained with **6 uL** of SYBR Safe.
Ran for **1.5 hours** at **100** volts.