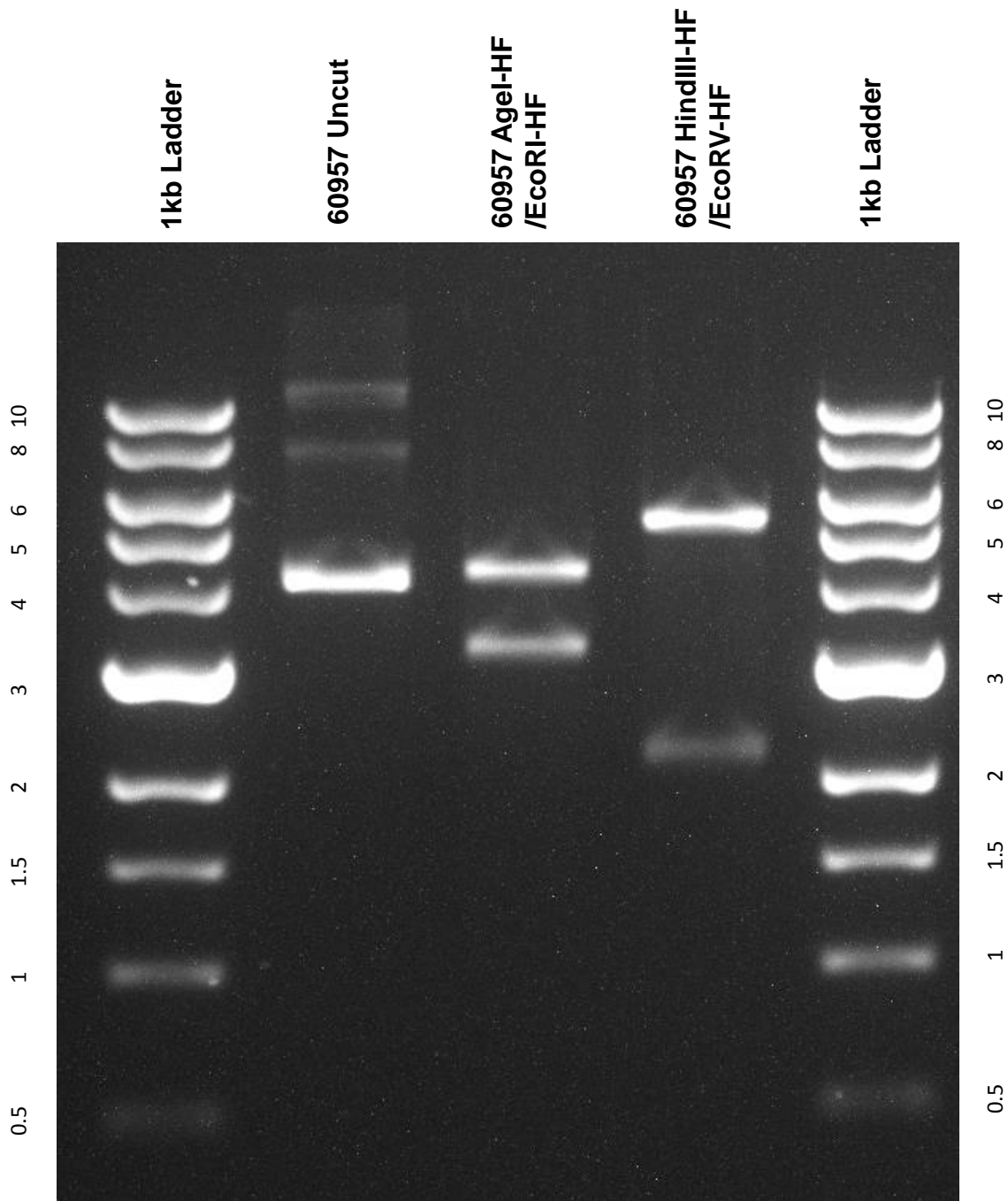


This gel depicts the NEB 1kb ladder and a digestion of the plasmid 60957 with the following enzymes: Agel-HF/EcoRI-HF and HindIII-HF/EcoRV-HF.

### Plasmid 60957: PX551



DNA digested with Agel-HF/EcoRI-HF, and HindIII-HF/EcoRV-HF (double digests) for **2 hours**.  
Gel: 0.8% TAE with 0.2% ethidium bromide.  
Run for 3.5 hours at **47** volts.