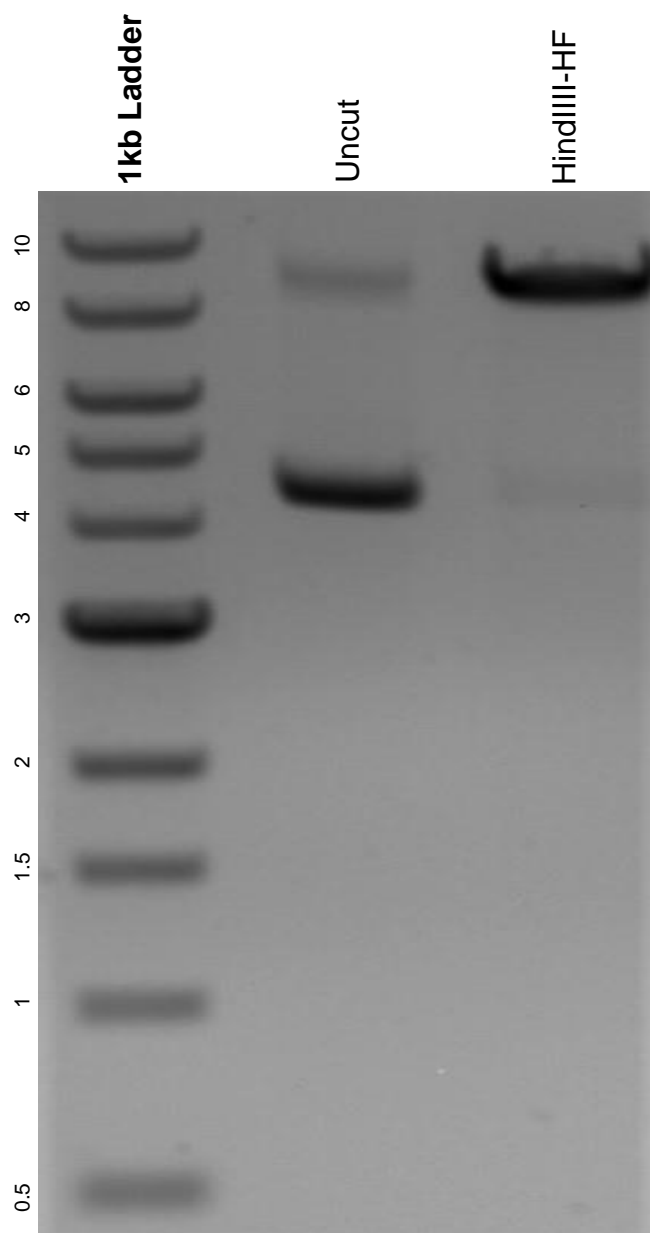


This gel depicts the NEB 1kb ladder and a digestion of the plasmid gRNA-hIRF-1 #12/pSIR with the following enzymes: HindIII-HF.

Plasmid 61080:
gRNA-hIRF-1 #12/pSIR



DNA digested with HindIII-HF single digest for **2 hours**.
Gel: 0.8% agarose stained with 6 uL of ethidium bromide.
Ran for 1.5 hours at 100 volts.