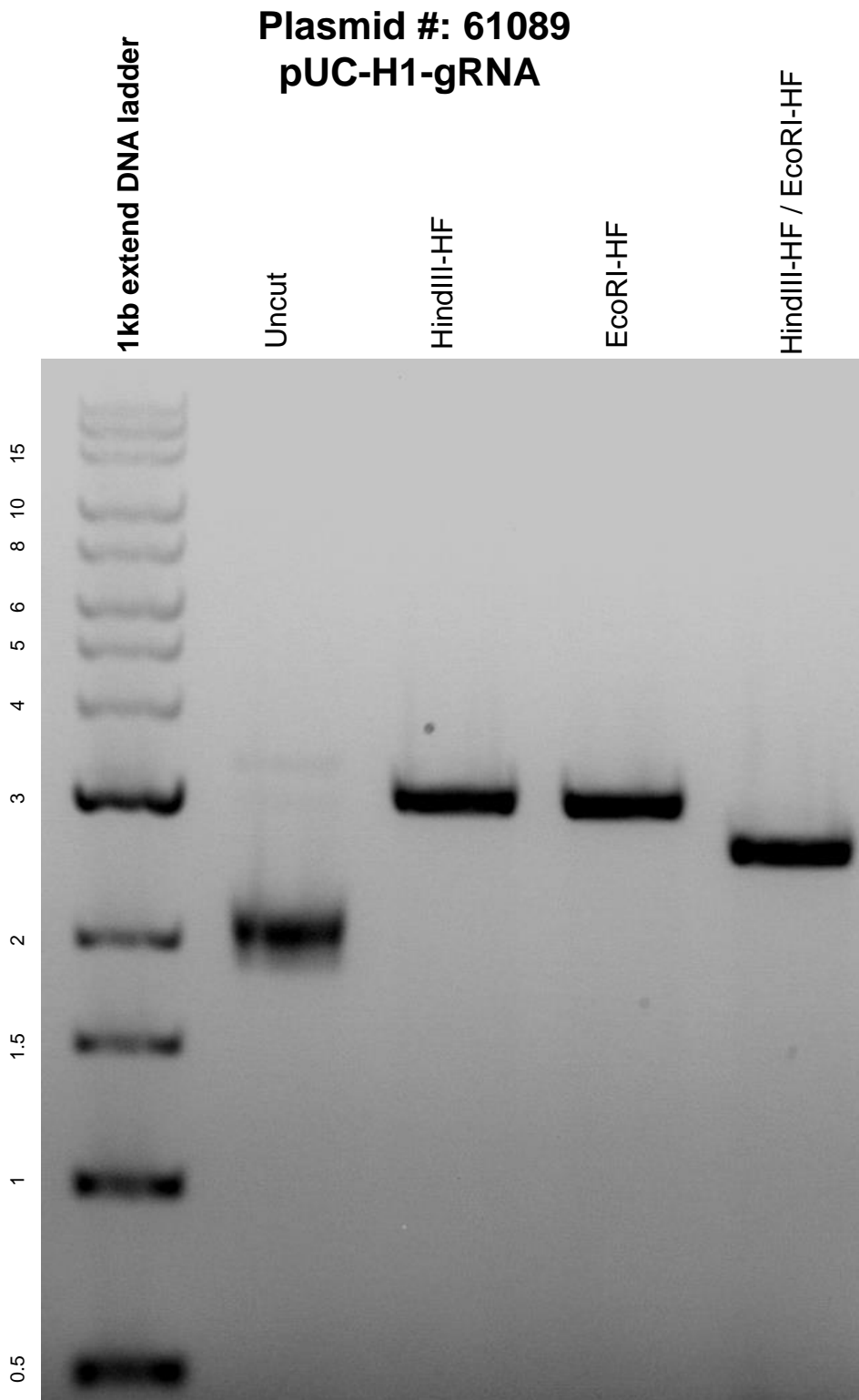


This gel depicts the NEB 1kb extend DNA ladder and a digestion of plasmid 61089 with HindIII-HF and EcoRI-HF.



DNA digested with HindIII-HF single digest, EcoRI-HF single digest, and HindIII-HF / EcoRI-HF double digest for **1.5 hours**. Gel: 0.8% agarose stained with ethidium bromide. Run for 2 hours at 80 volts.