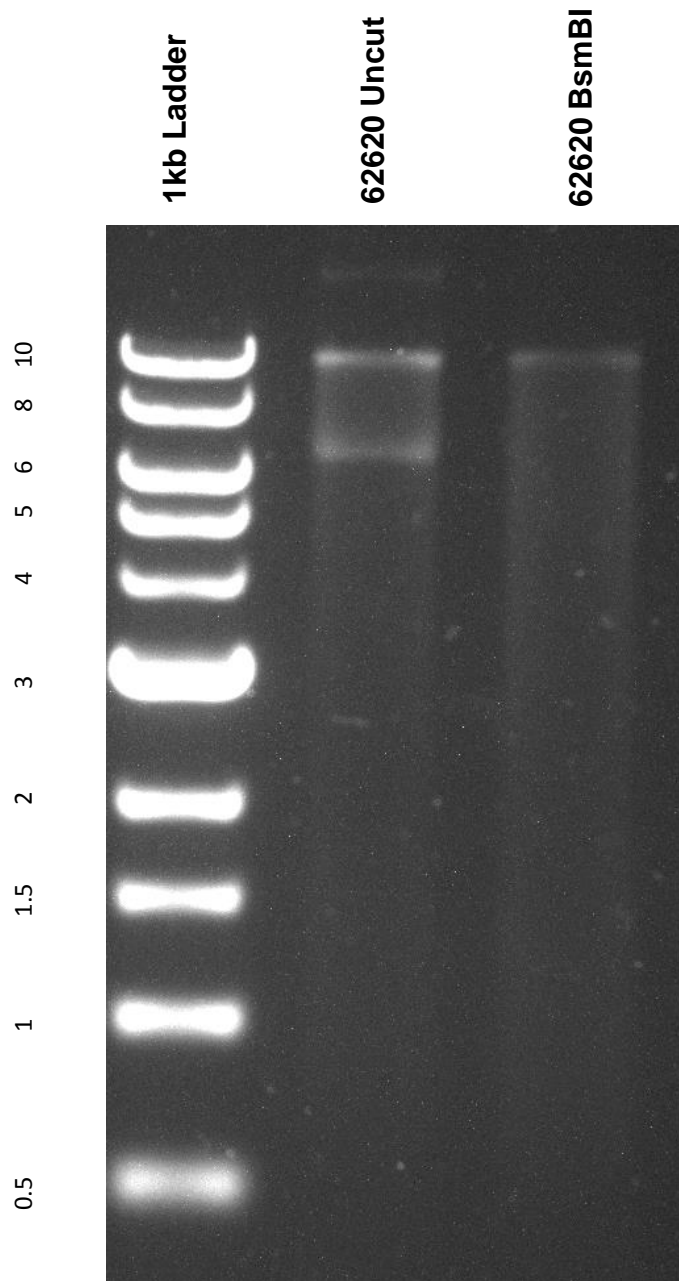


This gel depicts the NEB 1kb ladder and a digestion of the plasmid 61427 with the following enzyme: BsmBI.

Plasmid 61427: lenti sgRNA(MS2)_zeo backbone



DNA digested with BsmBI for **2 hours**.
Gel: 0.8% TAE with 0.2% ethidium bromide.
Run for 2 hours at **80** volts.