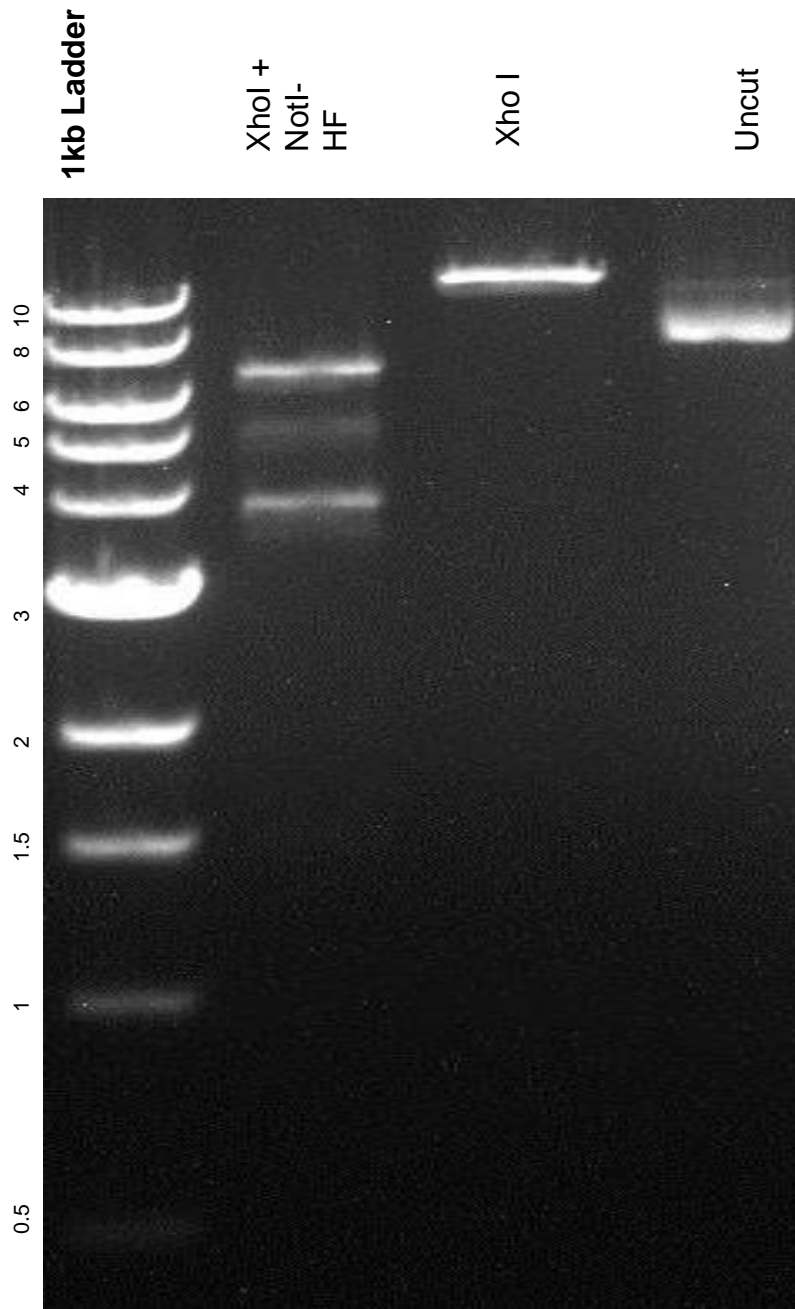


This gel depicts the NEB 1kb ladder and a digestion of the plasmid 61628 with the following enzymes: XhoI and NotI-HF

Plasmid 61628
pGreenII^M DR5v2-ntdTomato/DR5-n3GFP



DNA digested with XhoI single digest and XhoI+NotI-HF double digest for **2 hours**
Gel: 0.8% TAE pre-stained with 4 uL of ethidium bromide
Ran for 2 hours at **100** volts