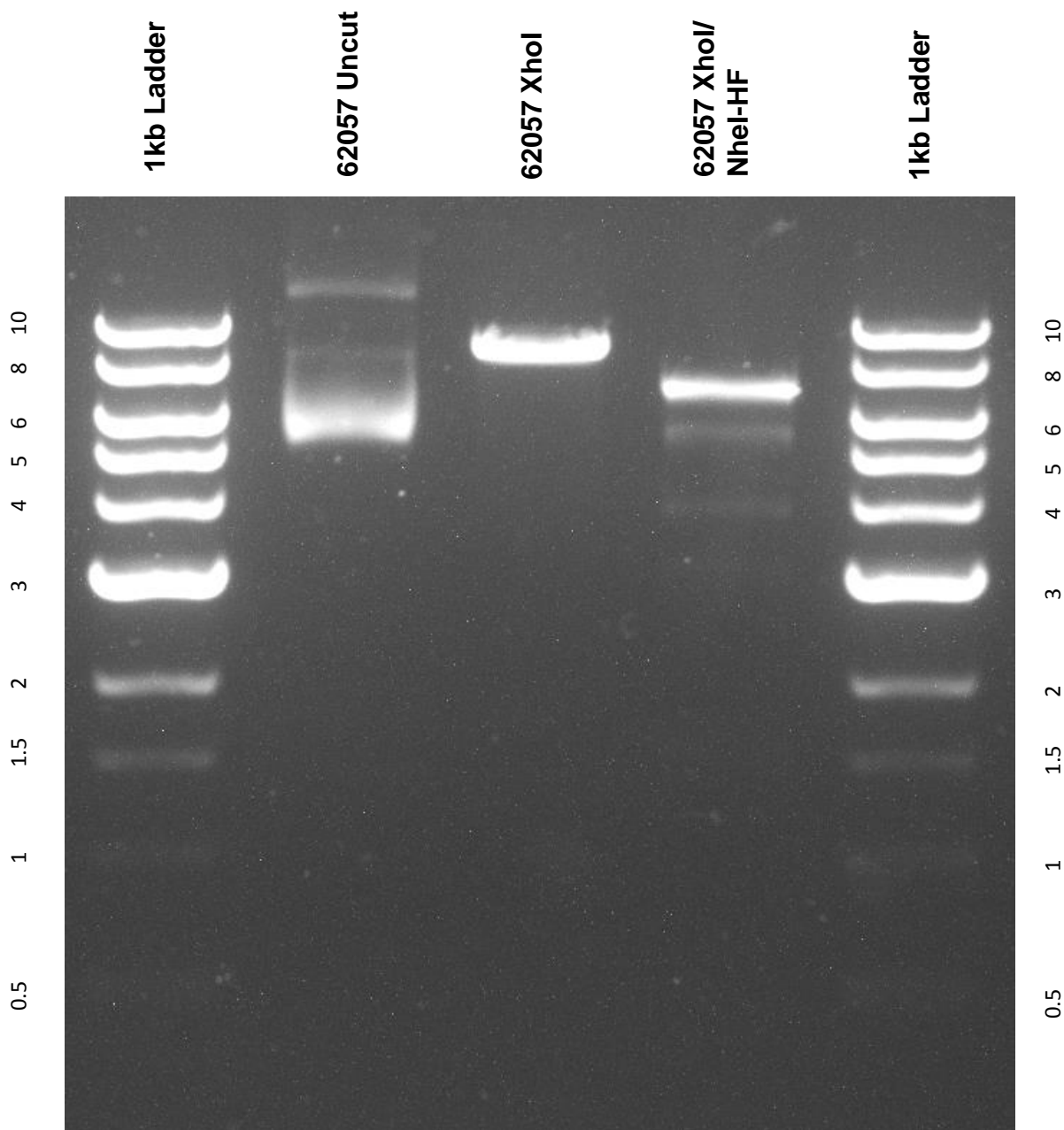


This gel depicts the NEB 1kb ladder and a digestion of the plasmid 62057 with the following enzymes: XhoI and NheI-HF.

Plasmid 62057: Proinsulin-NanoLuc in pLX304



DNA digested with XhoI and XhoI/NheI-HF double digest for **2 hours**.

Gel: 0.8% TAE with 0.2% ethidium bromide.

Run for 2 hours at **80** volts.