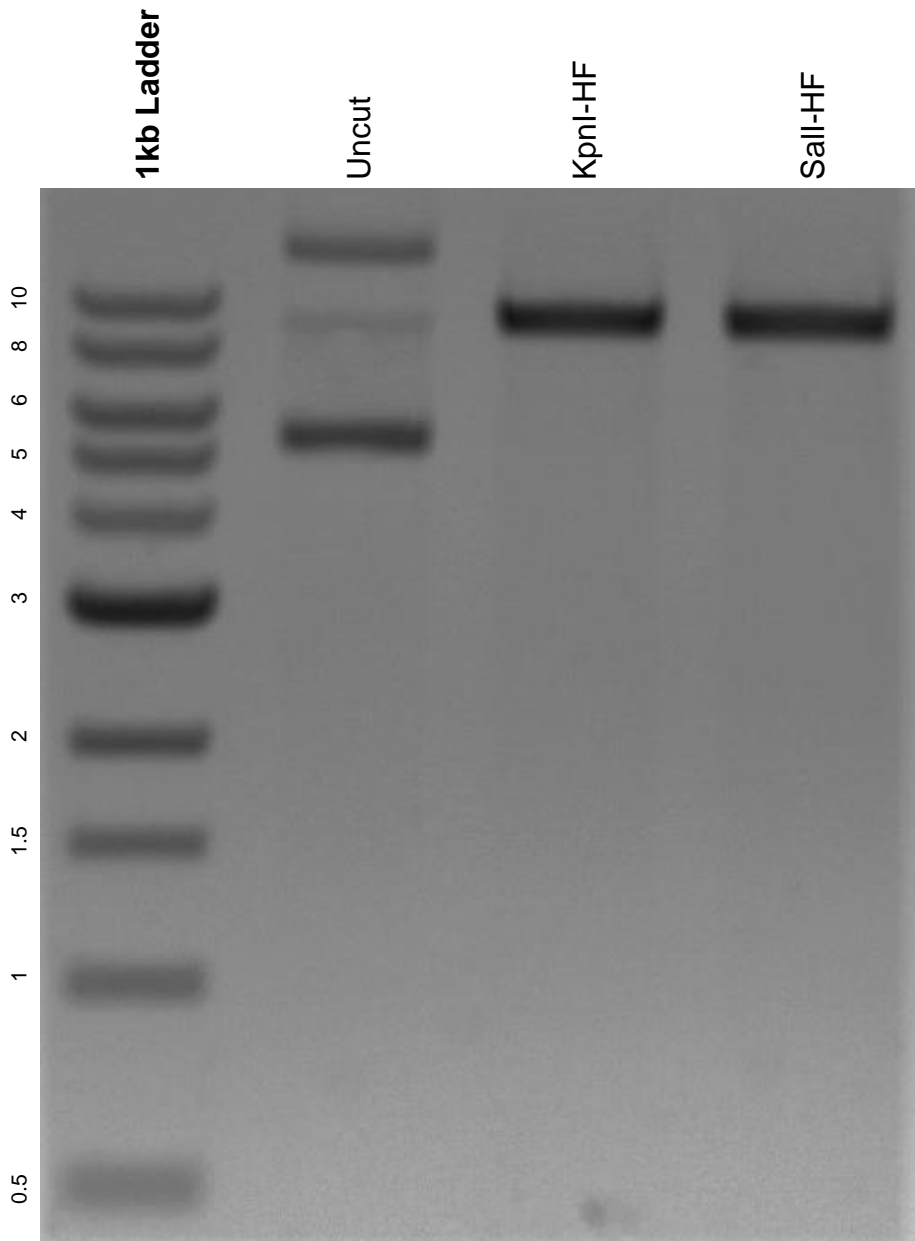


This gel depicts the NEB 1kb ladder and a digestion of the plasmid pMuLE Lenti Dest Neo with the following enzymes: KpnI-HF and Sall-HF.

Plasmid 62178:
pMuLE Lenti Dest Neo



DNA digested with KpnI-HF and Sall-HF single digests for **2 hours**.
Gel: 0.8% agarose stained with 6 uL of ethidium bromide.
Ran for 1.5 hours at 100 volts.