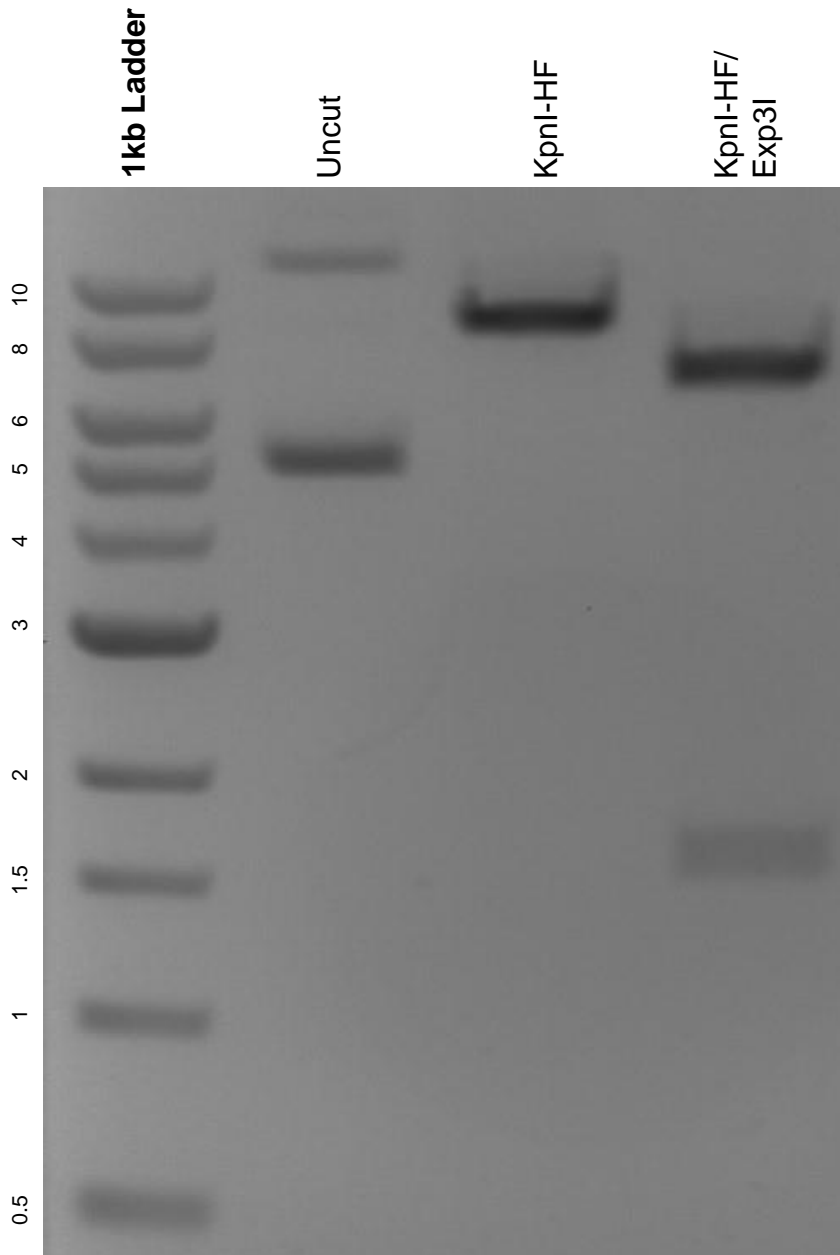


This gel depicts the NEB 1kb ladder and a digestion of the plasmid GFP-Drosha with the following enzymes: KpnI-HF and Esp3I.

Plasmid 62520:
GFP-Drosha



DNA digested with KpnI-HF single digest and KpnI-HF/ Esp3I double digest for **2 hours**.

Gel: 0.8% agarose stained with 6 uL of ethidium bromide.

Ran for 1.5 hours at 100 volts.