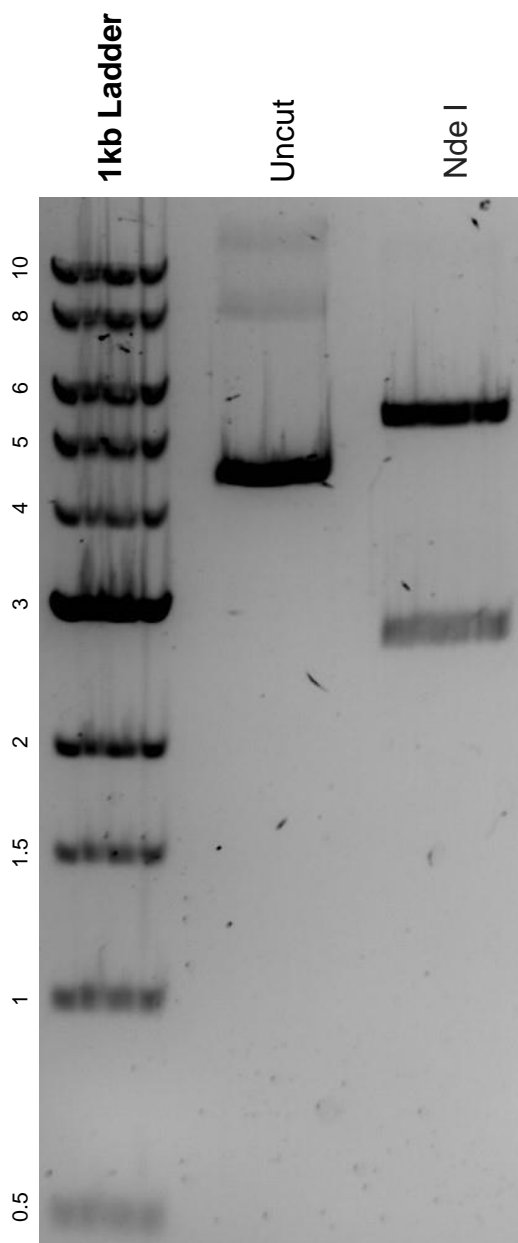


This gel depicts the NEB 1kb ladder and a digestion of the plasmid pMF230 with the following enzyme(s): Nde I.

**Plasmid 62546:
pMF230**



DNA digested with an Nde I single digest for **2 hours**.
Gel: 0.8% agarose stained with 5 uL of SYBR Safe.
Ran for 1.5 hours at 100 volts.