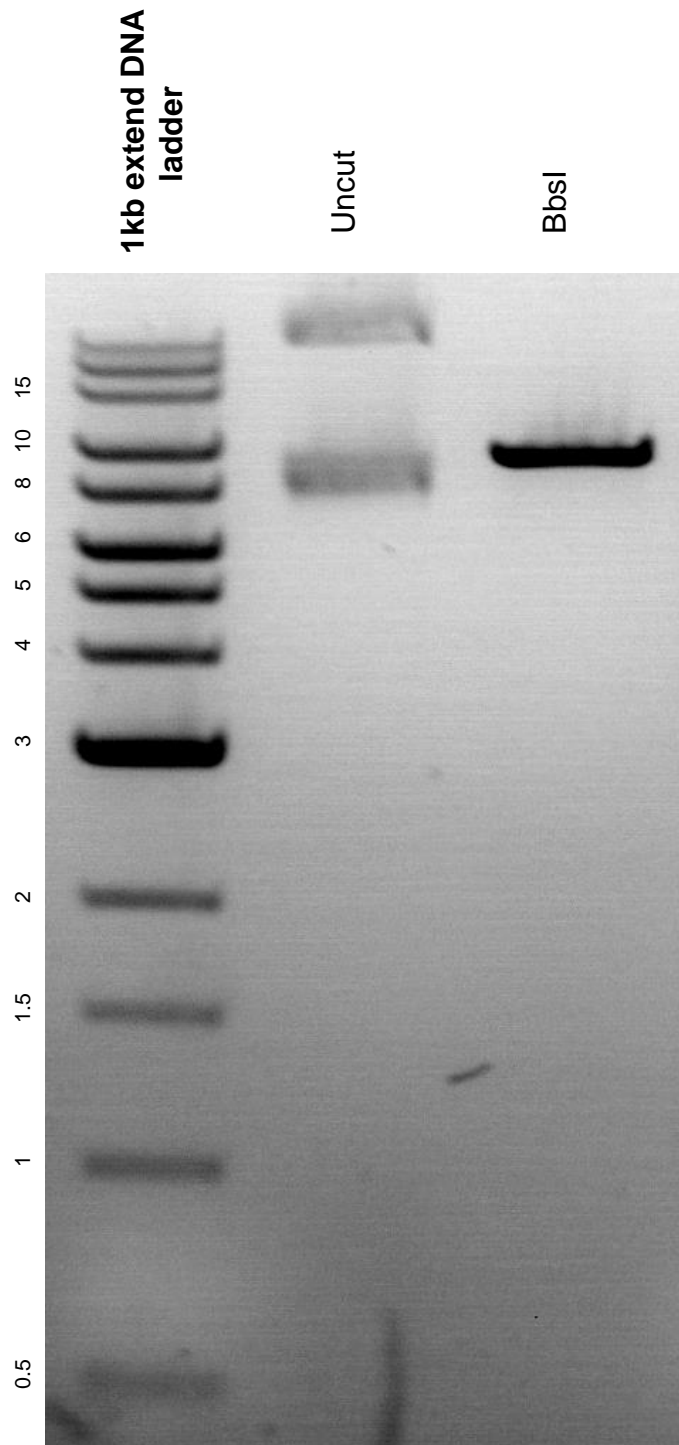


This gel depicts the NEB 1kb extend DNA ladder and a digestion of plasmid 62987 with BbsI.

Plasmid #: 62987
pSpCas9n(BB)-2A-Puro (PX462) V2.0



DNA digested with BbsI single digest for **2.5 hours**. Gel: 0.8% agarose stained with ethidium bromide. Run for 2 hours at 80 volts.