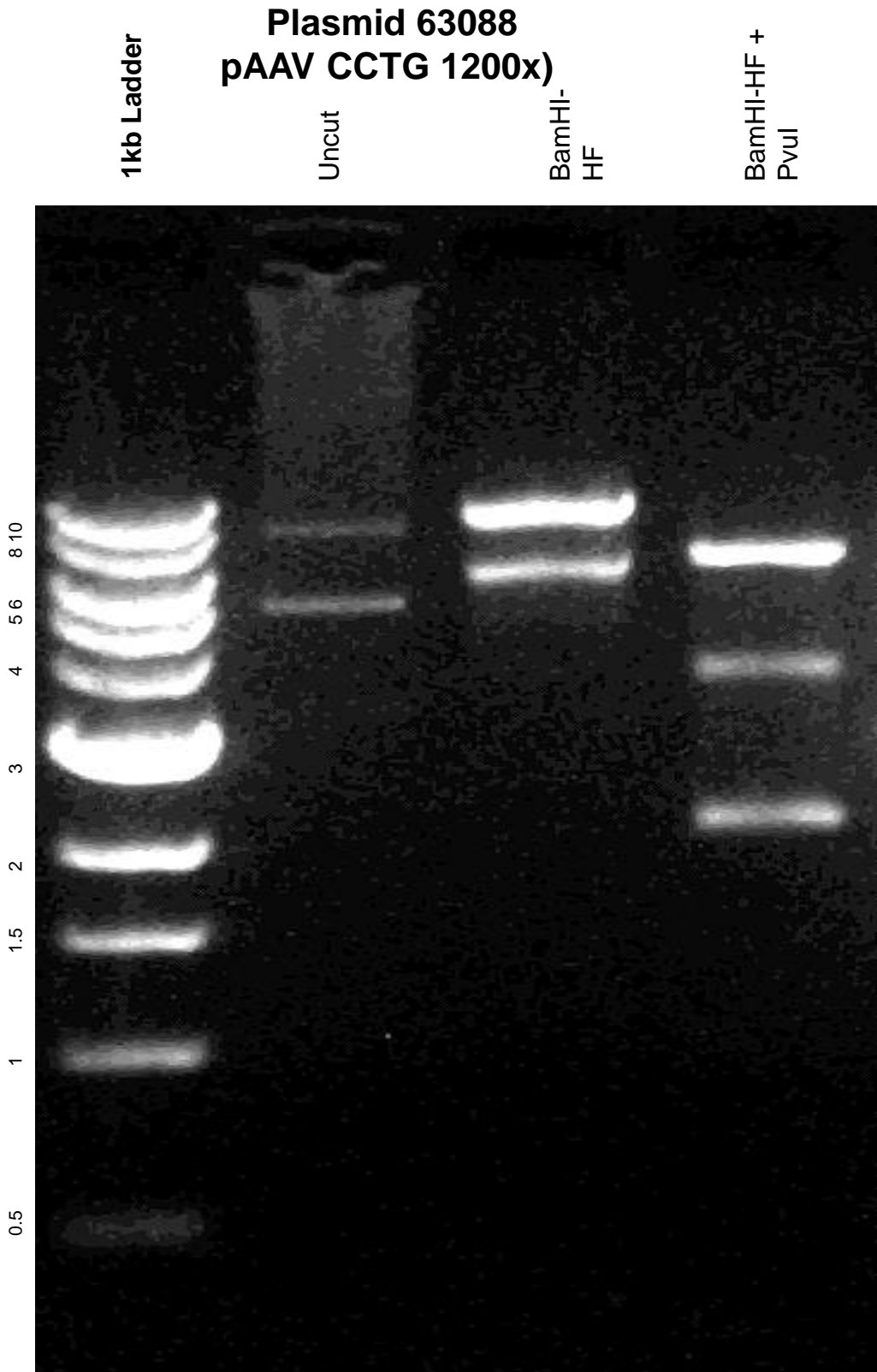


This gel depicts the NEB 1kb ladder and a digestion of the plasmid 63088 with the following enzymes: BamHI, BamHI + PvuI



DNA digested with BamHI-HF single digest and BamHI-HF+PvuI double digest for **2 hours**

Gel: 0.8% TAE pre-stained with 3 uL of ethidium bromide

Ran for 3 hours at **47** volts