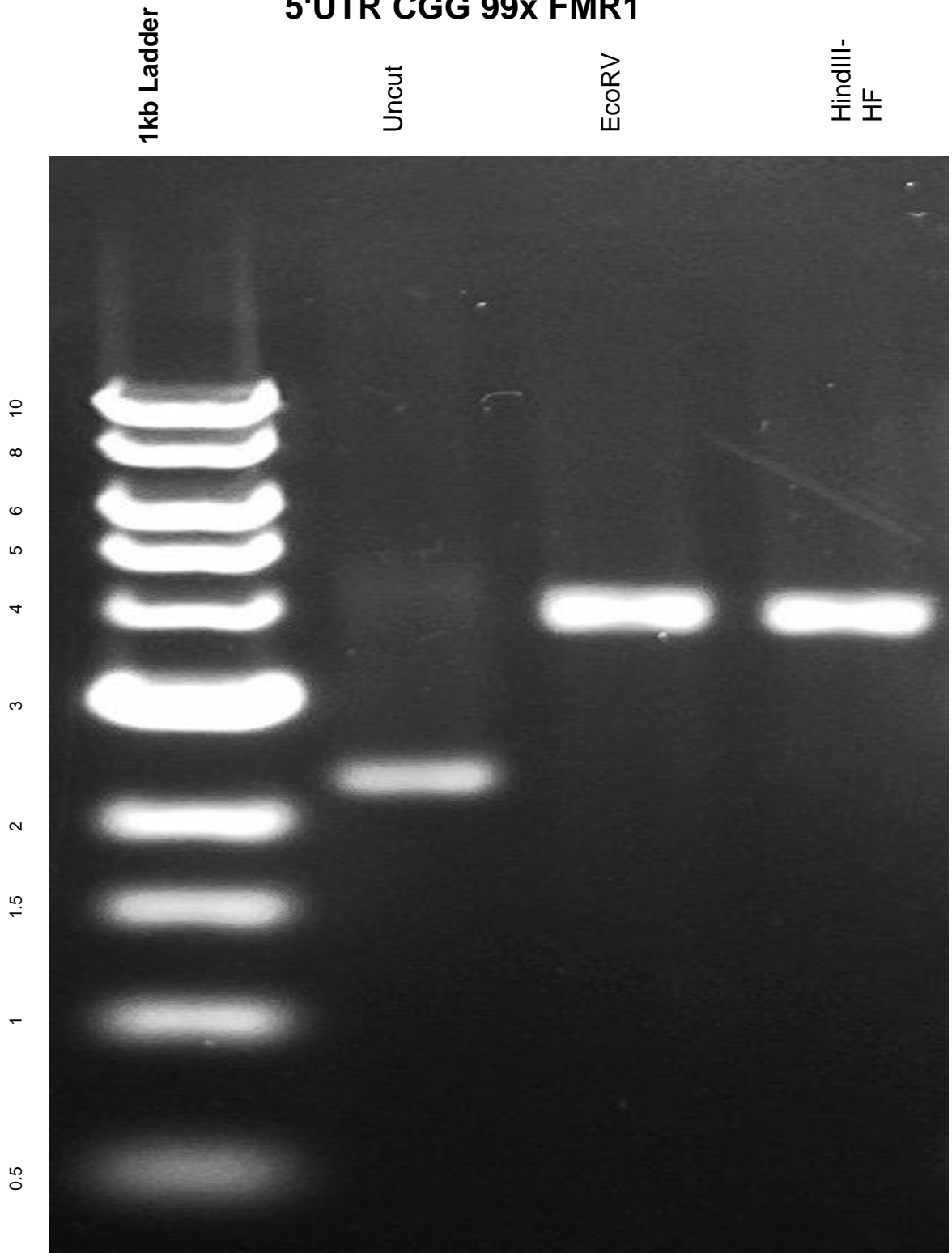


This gel depicts the NEB 1kb ladder and a digestion of the plasmid 63089 with the following enzymes: EcoRV, and HindIII-HF

Plasmid 63089
5'UTR CGG 99x FMR1



DNA digested with EcoRV-HF and HindIII-HF single digest for **2 hours**
Gel: 0.8% TAE pre-stained with 3 uL of ethidium bromide
Ran for 4 hours at **47 volts**