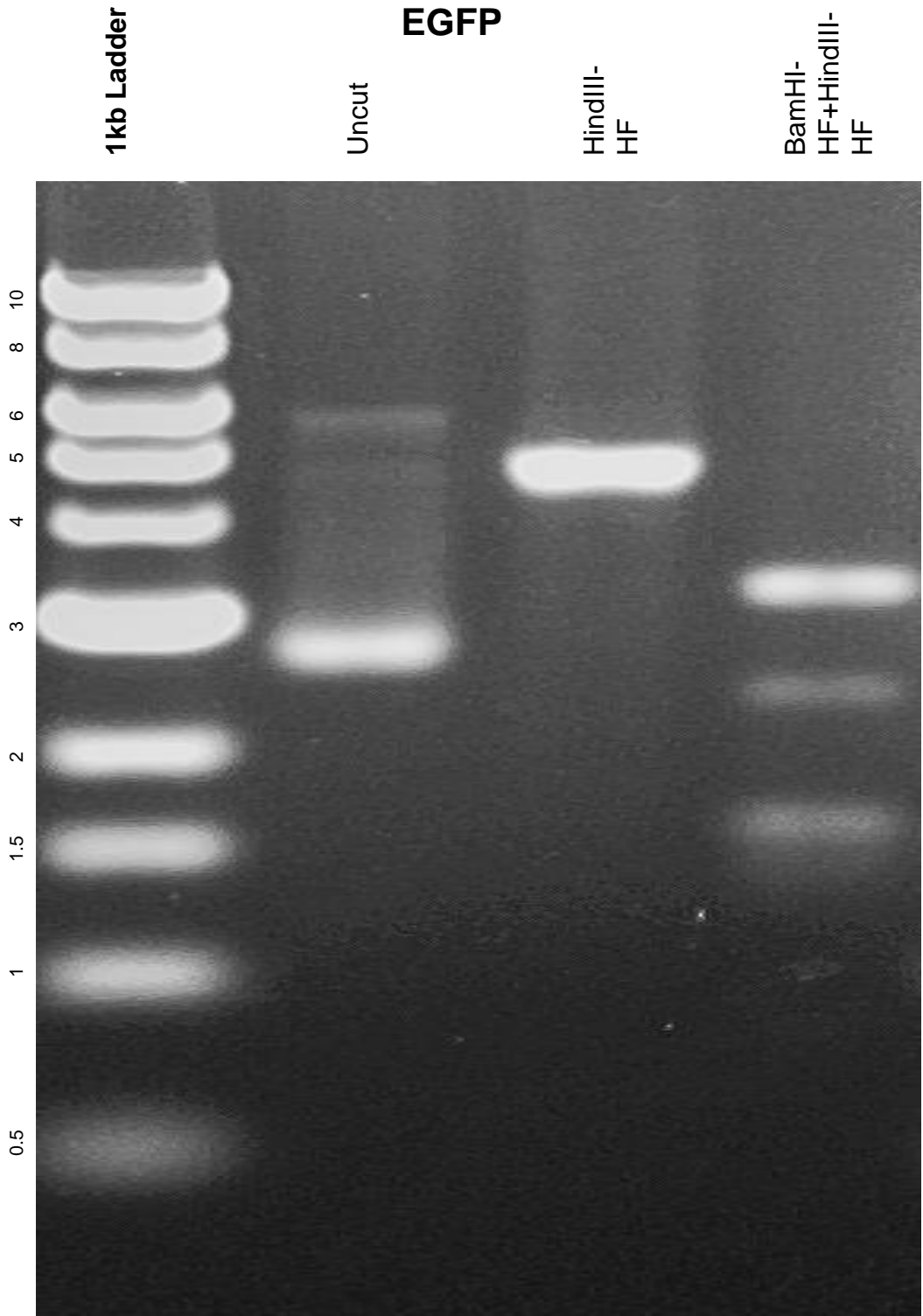


This gel depicts the NEB 1kb ladder and a digestion of the plasmid 63091 with the following enzymes: HindIII-HF and BamHI+HindIII

Plasmid 63091
5'UTR CGG 99x FMR1-
EGFP



DNA digested with HindIII-HF single digest and BamHI-HF+ HindIII-HF double digest for **2 hours**

Gel: 0.8% TAE pre-stained with 3 uL of ethidium bromide

Ran for 4 hours at **47** volts