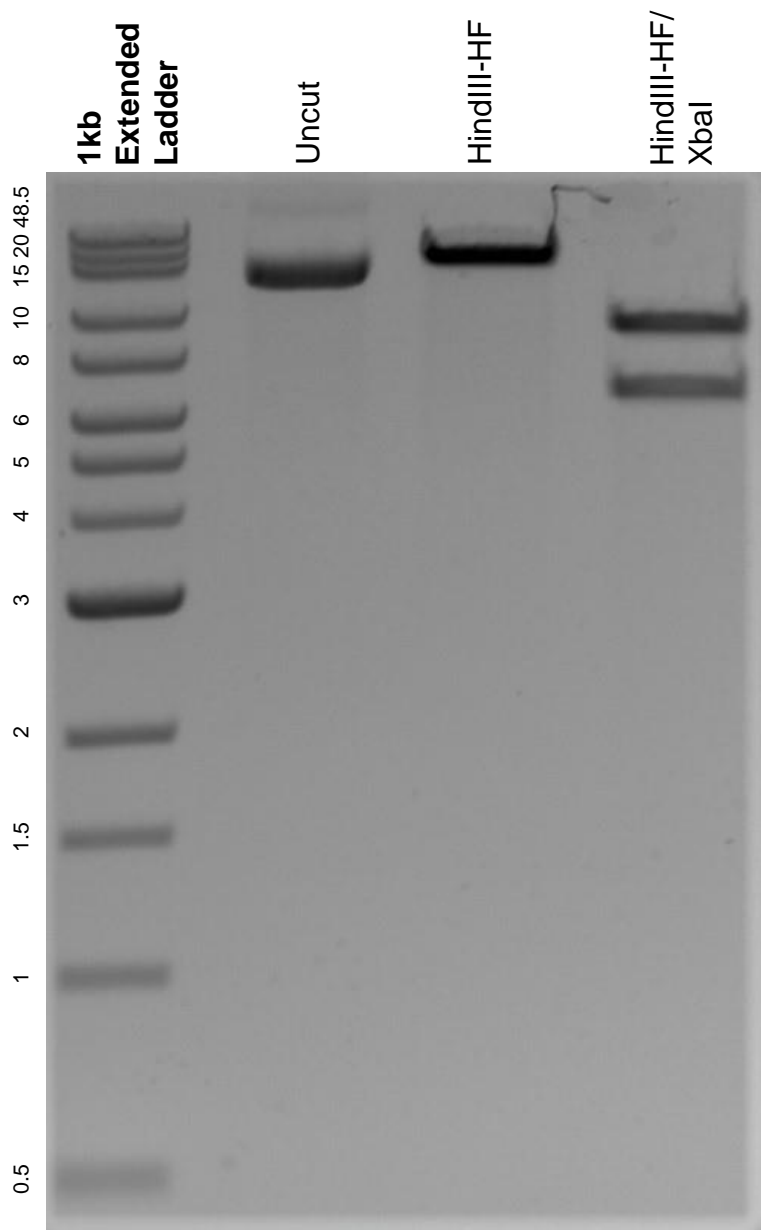


This gel depicts the NEB 1kb extended ladder and a digestion of the plasmid pRGEB32 with the following enzymes: HindIII-HF and XbaI.

Plasmid 63142:
pRGEB32



DNA digested with HindIII-HF single digest and HindIII-HF/ XbaI double digest for **2 hours**.

Gel: 0.8% agarose stained with 6 uL of ethidium bromide.

Ran for 1.5 hours at 100 volts.