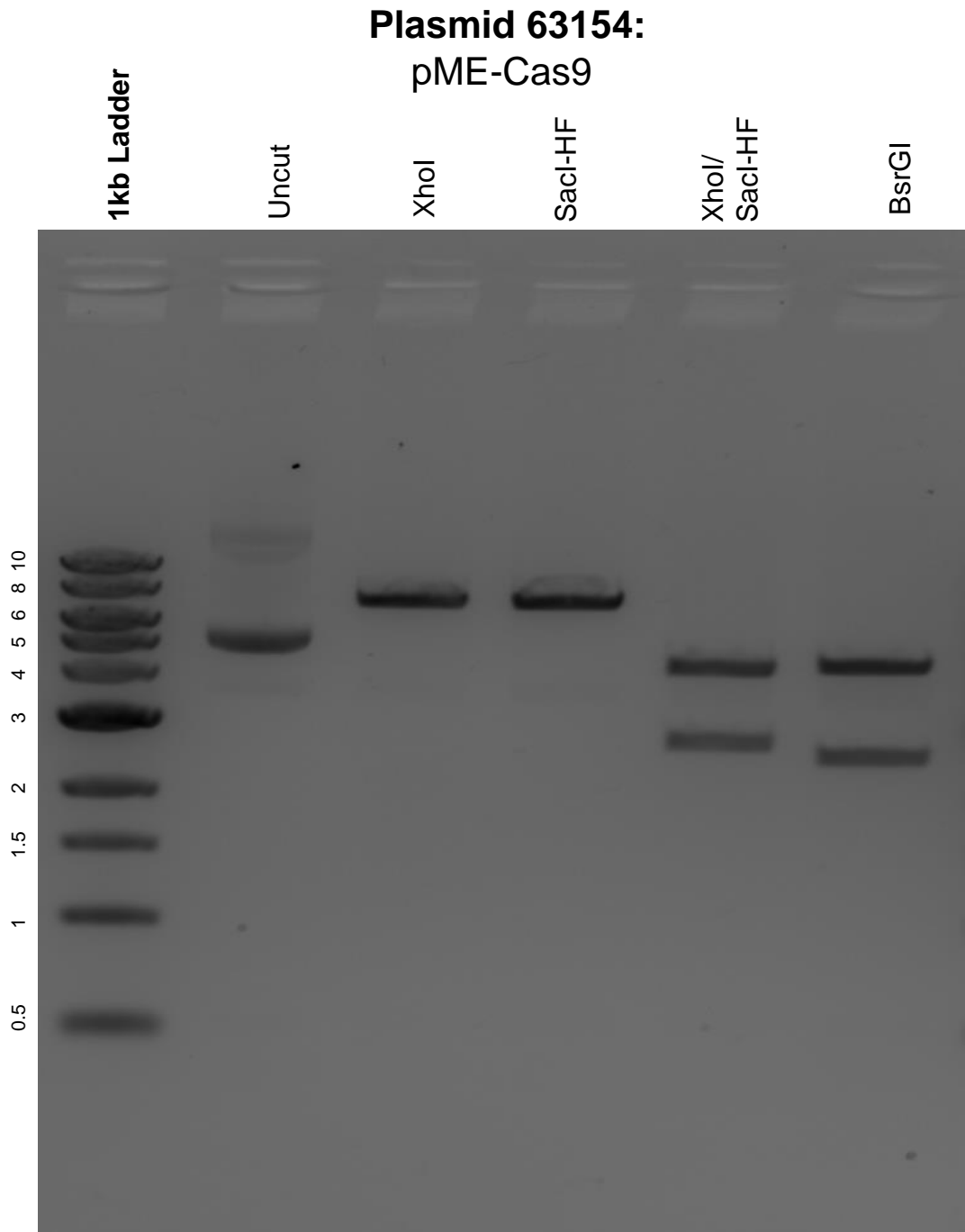


This gel depicts the NEB 1kb ladder and a digestion of the plasmid pME-Cas9 with the following enzymes: XhoI, SacI-HF, and BsrGI.



DNA digested with XhoI, SacI-HF, and BsrGI single digests and XhoI/SacI-HF double digest for **2 hours**.

Gel: 0.8% agarose stained with 5 uL of ethidium bromide.

Ran for 1.5 hours at 100 volts.