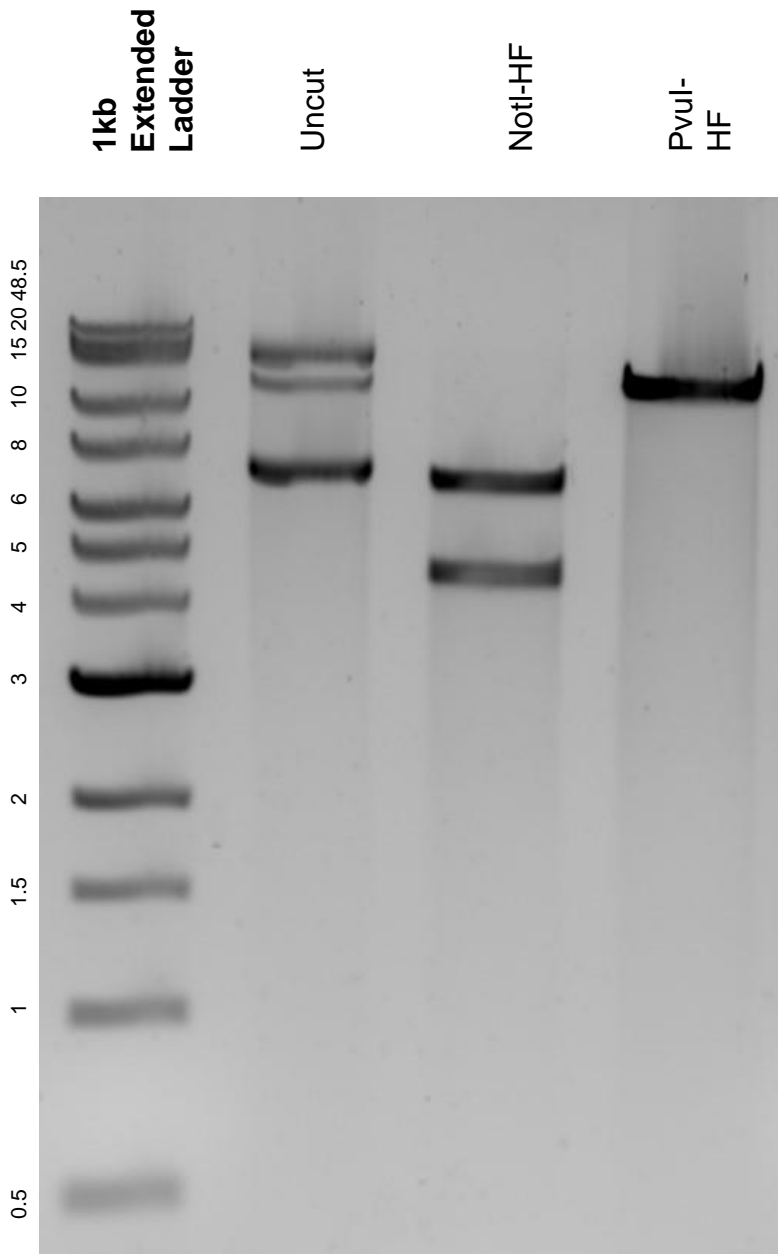


This gel depicts the NEB 1kb extended ladder and a digestion of the plasmid pLenti-myc-GLUT4-mCherry with the following enzymes: NotI-HF and PvuI-HF.

Plasmid 64049:
pLenti-myc-GLUT4-mCherry



DNA digested with NotI-HF and PvuI-HF single for **2 hours**.
Gel: 0.8% agarose stained with 5 uL of ethidium bromide.
Ran for 1.5 hours at 100 volts.