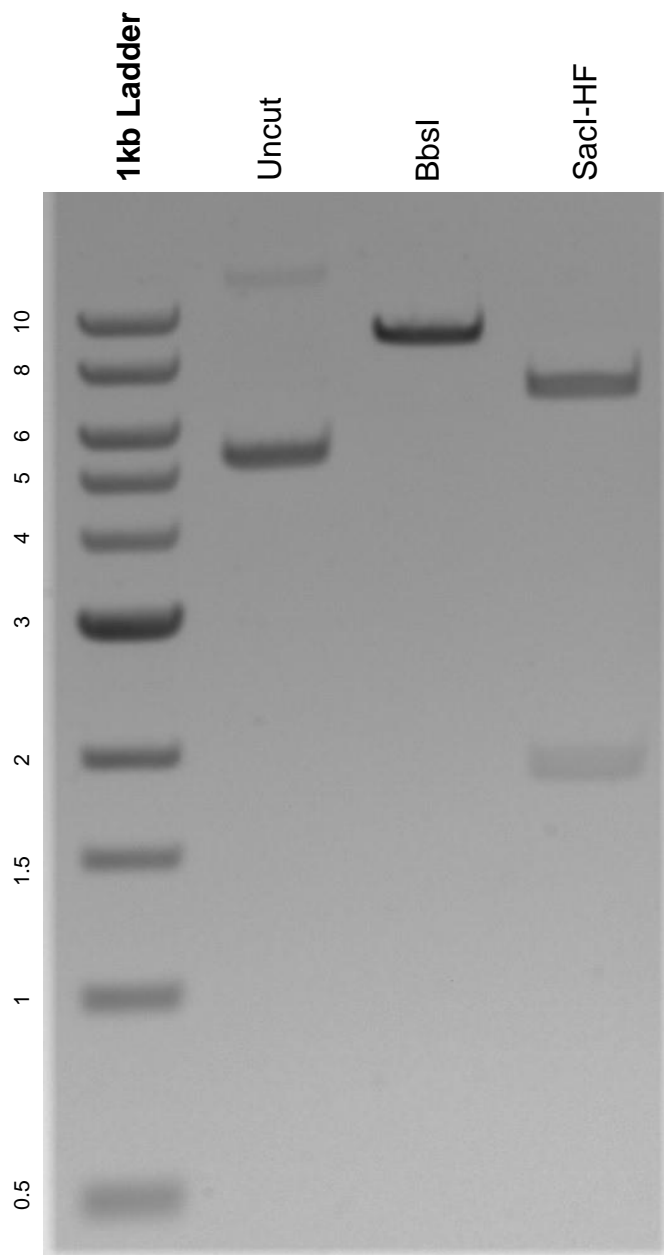


This gel depicts the NEB 1kb ladder and a digestion of the plasmid pX333 with the following enzymes: BbsI and SacI-HF.

**Plasmid 64073:**  
pX333



DNA digested with BbsI and SacI-HF single digests for **2 hours**.  
Gel: 0.8% agarose stained with 5 uL of ethidium bromide.  
Ran for 1.5 hours at 100 volts.