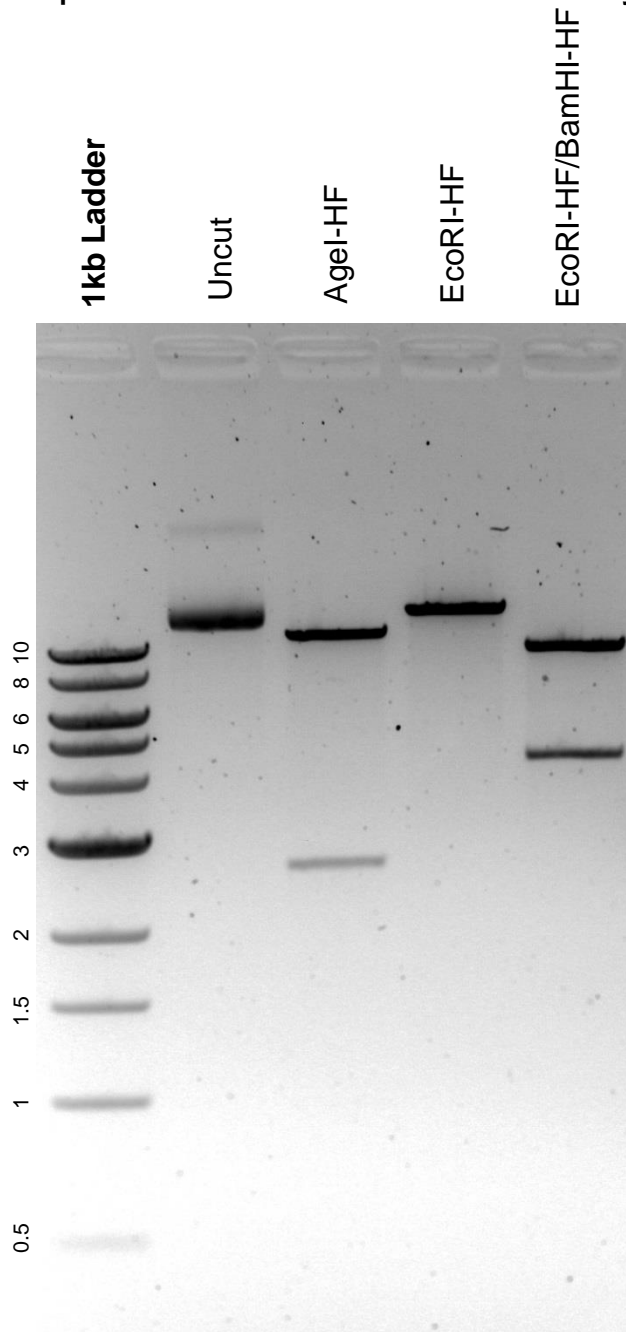


This gel depicts the NEB 1kb ladder and a digestion of the plasmid pHAGE-TO-dCas9-3XmCherry with the following enzymes: AgeI-HF, EcoRI-HF, and BamHI-HF.

**Plasmid 64108:**  
pHAGE-TO-dCas9-3XmCherry



DNA digested with AgeI-HF and EcoRI-HF single digests and EcoRI-HF/BamHI-HF double digest for **2 hours**.

Gel: 0.8% agarose stained with 3 uL of ethidium bromide.

Ran for 2 hours at 80 volts.