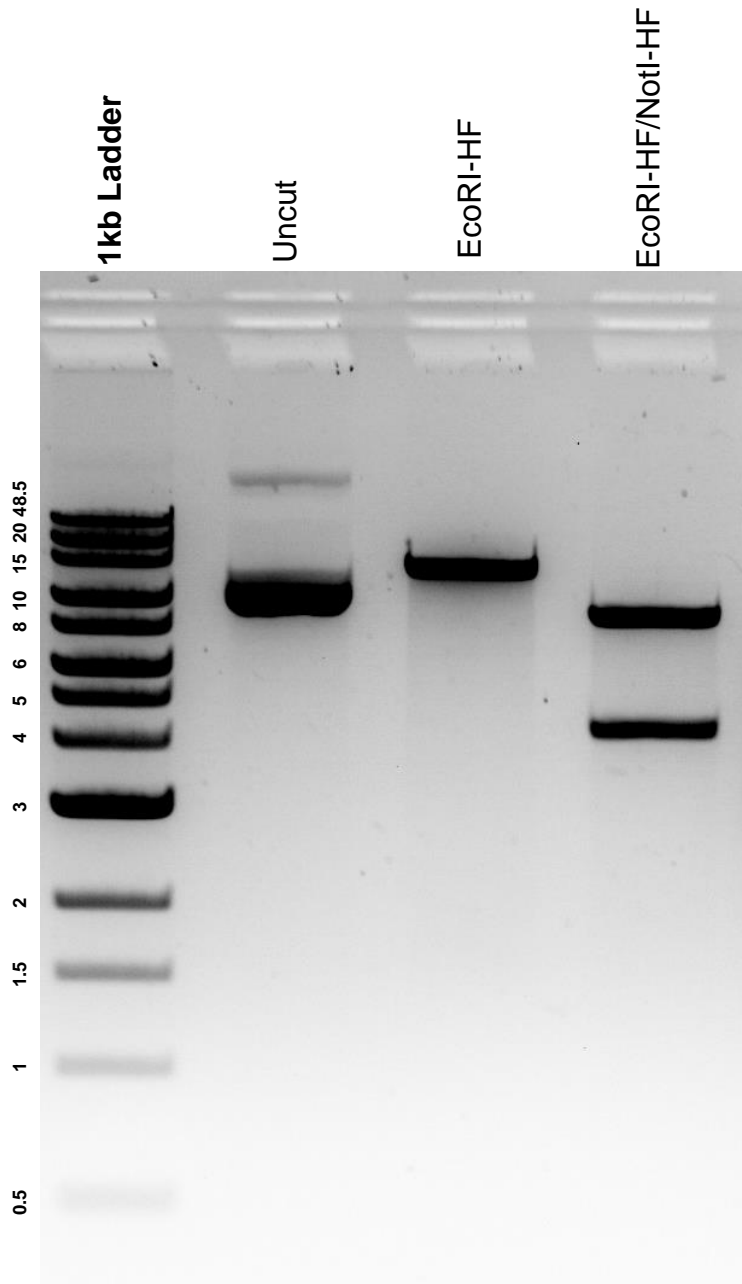


This gel depicts the NEB 1kb extend ladder and a digestion of the plasmid pHAGE-TO-nmdCas9-3XmCherry with the following enzymes: EcoRI-HF and NotI-HF.

Plasmid 64110:
pHAGE-TO-nmdCas9-3XmCherry



DNA digested with EcoRI-HF single digest and EcoRI-HF/NotI-HF double digest for **2 hours**.

Gel: 0.8% agarose stained with 5 uL of ethidium bromide.

Ran for 2 hours at 80 volts.