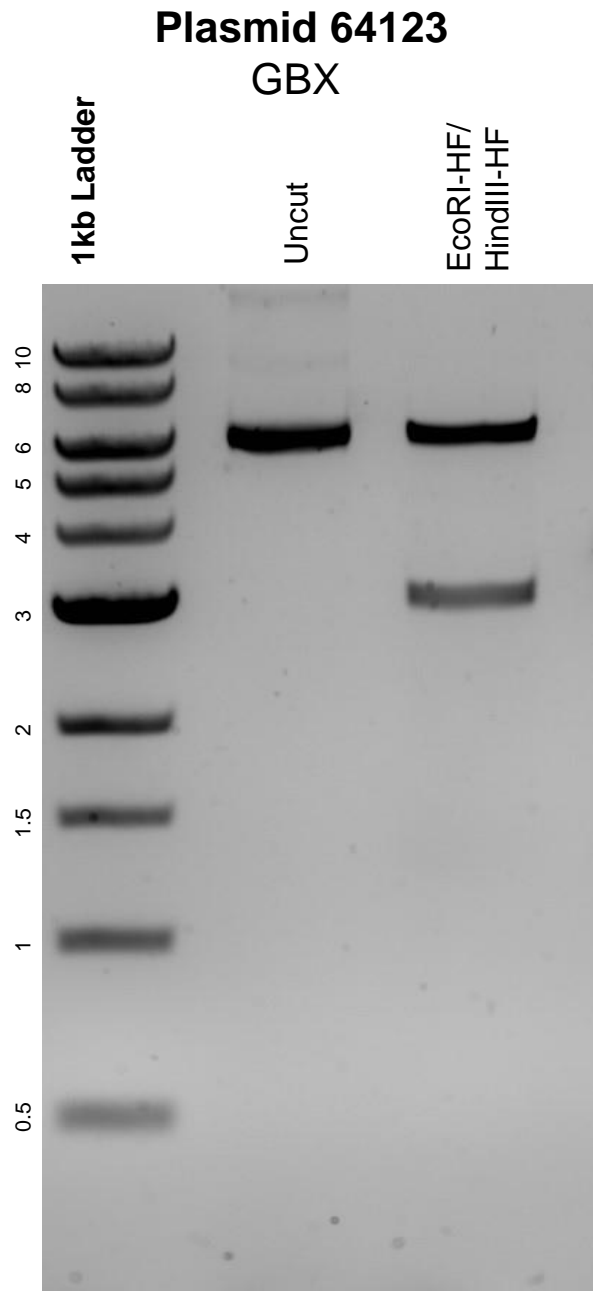


This gel depicts the NEB 1kb Ladder and a digestion of the plasmid GBX with the following enzymes: EcoRI-HF and HindIII-HF



DNA digested with EcoRI-HF and HindIII-HF double digests for **2 hours**.
Gel: 0.8% agarose stained with 5 uL of ethidium bromide.
Ran for 1.5 hours at 100 volts.