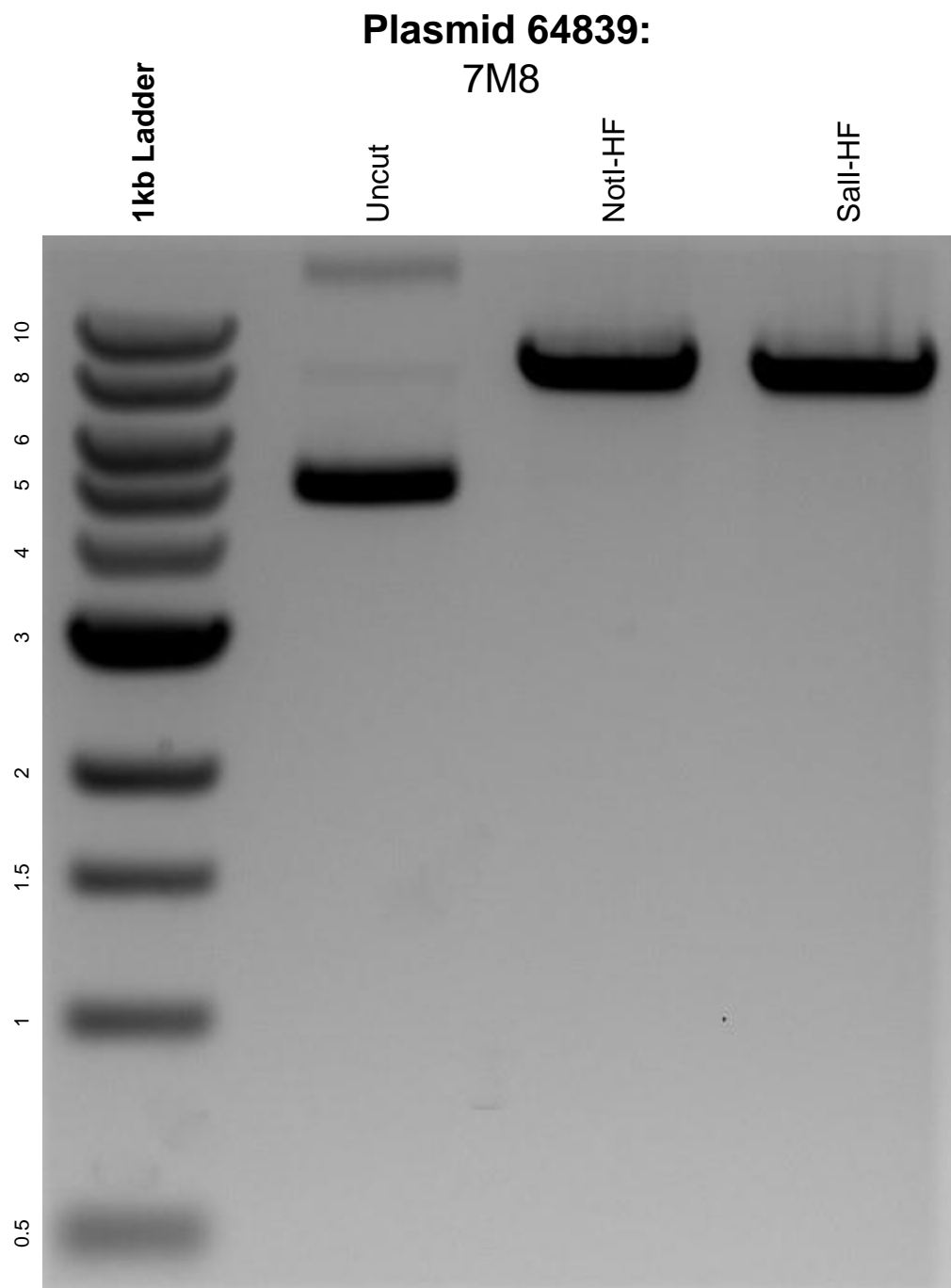


This gel depicts the NEB 1kb ladder and a digestion of the plasmid 7M8 with the following enzymes: NotI-HF and Sall-HF.



DNA digested with NotI-HF and Sall-HF single digests for **2 hours**.

Gel: 0.8% agarose stained with 6 uL of ethidium bromide.

Ran for 1.5 hours at 100 volts.