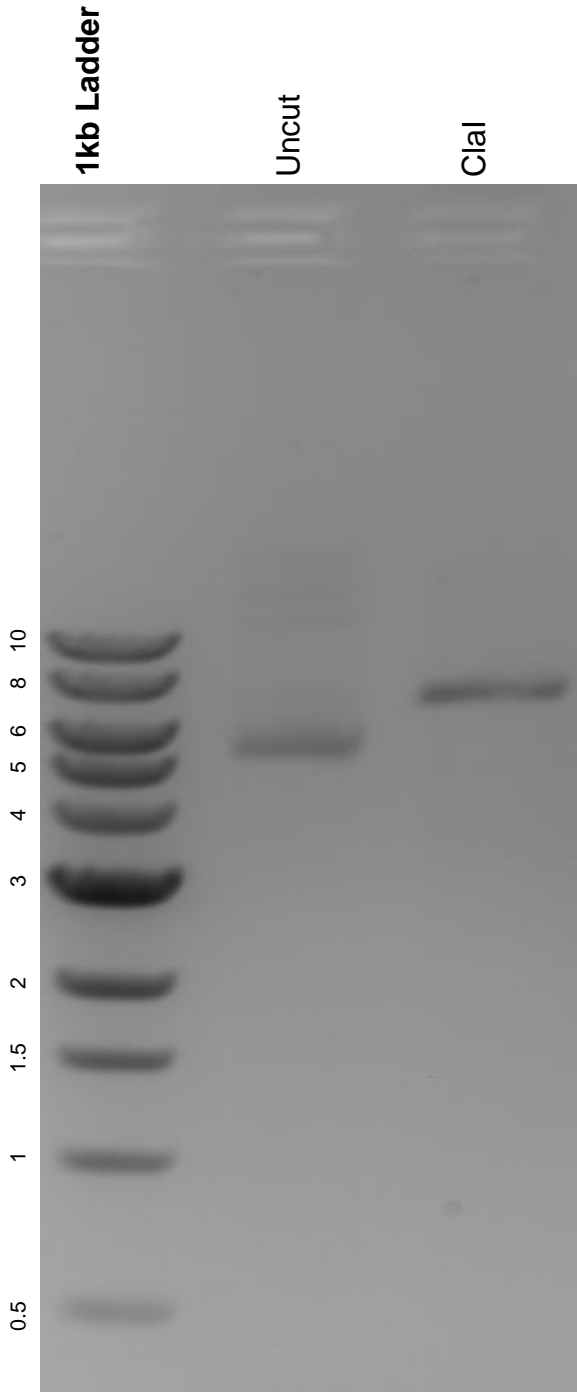


This gel depicts the NEB 1kb ladder and a digestion of the plasmid pBABE TIR1-9myc with the following enzyme: Clal.

**Plasmid 64945:**  
pBABE TIR1-9myc



DNA digested with Clal single digest for **2 hours**.  
Gel: 0.8% agarose stained with 5 uL of ethidium bromide.  
Ran for 1.5 hours at 100 volts.