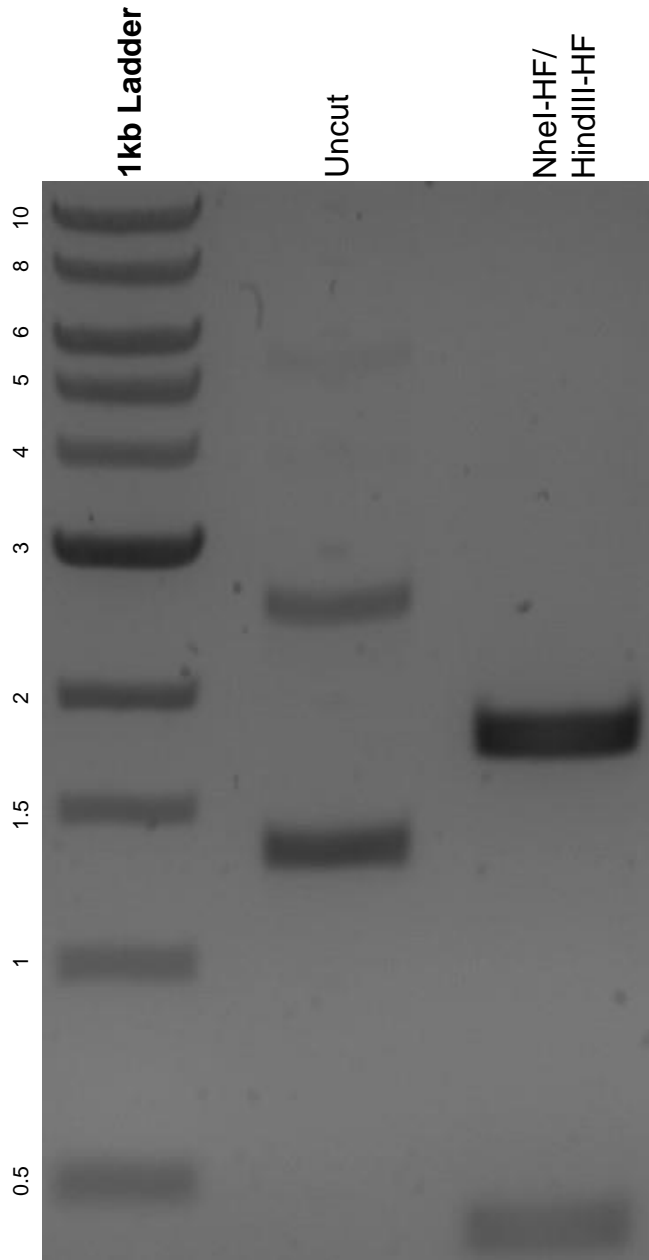


This gel depicts the NEB 1kb ladder and a digestion of the plasmid BPK1520 with the following enzymes: NheI-HF and HindIII-HF.

**Plasmid 65777:  
BPK1520**



DNA digested with an NheI-HF/HindIII-HF double digest for **2 hours**.  
Gel: 0.8% agarose stained with 5 uL of ethidium bromide.  
Ran for 1.5 hours at 100 volts.