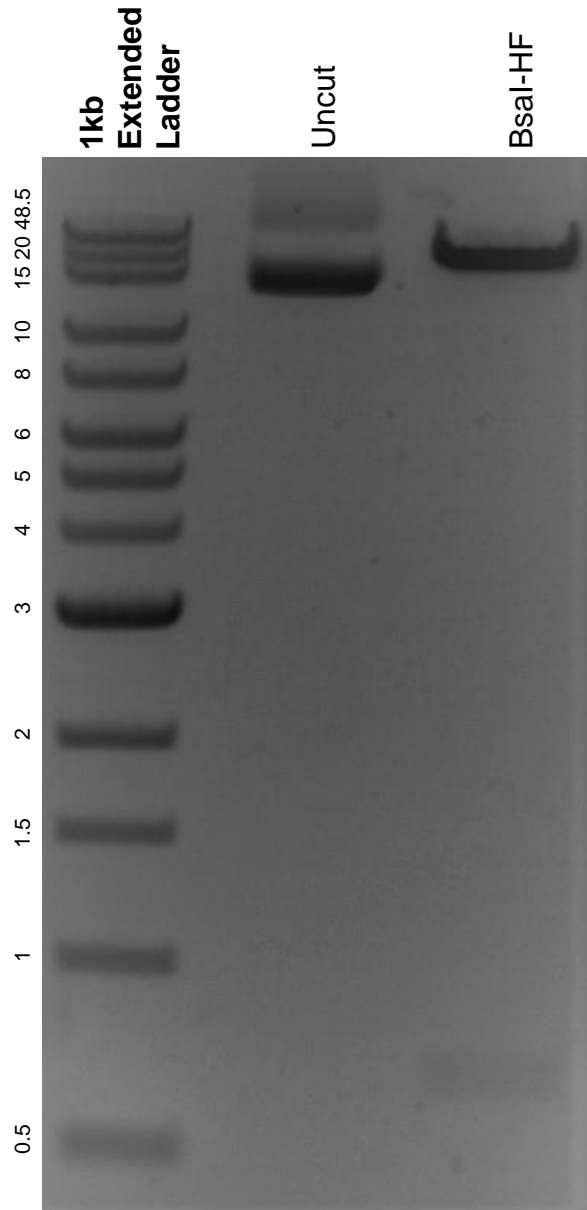


This gel depicts the NEB 1kb extended ladder and a digestion of the plasmid pYLCRISPR/Cas9Pubi-H with the following enzymes: Bsal-HF.

Plasmid 66187:
pYLCRISPR/Cas9Pubi-H



DNA digested with Bsal-HF single digest for **2 hours**.
Gel: 0.8% agarose stained with 6 uL of ethidium bromide.
Ran for 1.5 hours at 100 volts.