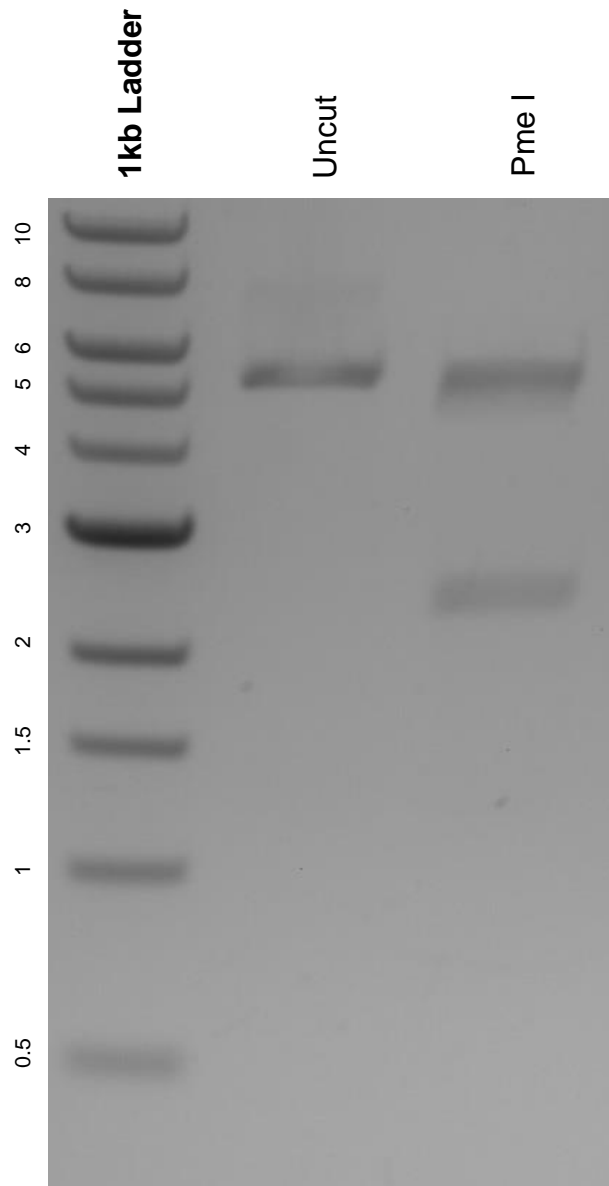


This gel depicts the NEB 1kb ladder and a digestion of the plasmid S1PR1-Tango with the following enzyme: Pme I.

Plasmid 66496:
S1PR1-Tango



DNA digested with a Pme I single digest for **2 hours**.
Gel: 0.8% agarose stained with 5 uL of ethidium bromide.
Ran for 1.5 hours at 100 volts.