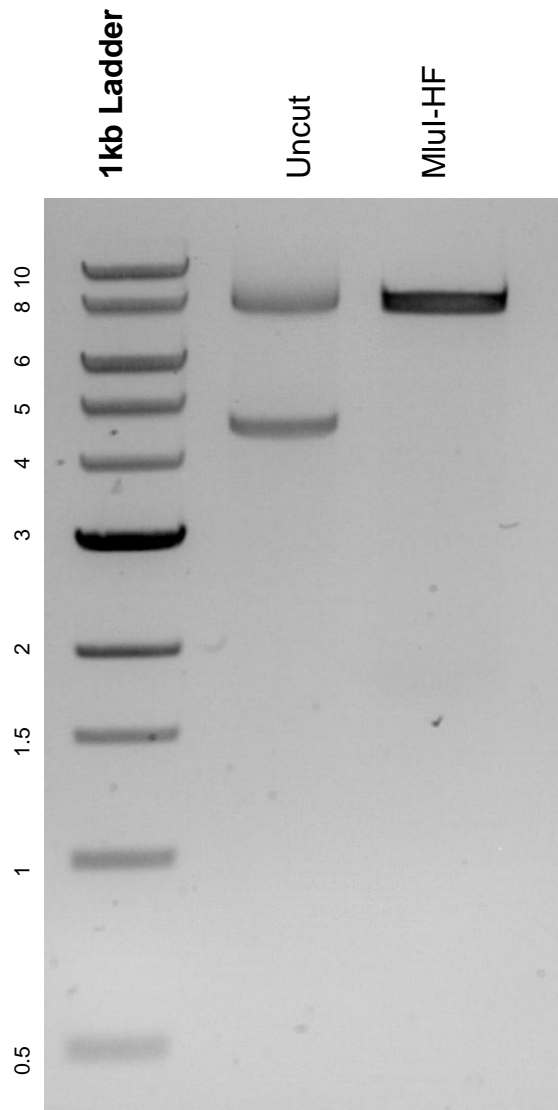


This gel depicts the NEB 1kb Ladder and a digestion of the plasmid VIPR2-Tango with the following enzyme: MluI-HF

Plasmid 66521 VIPR2-Tango



DNA digested with MluI-HF a single digest for **2 hours**.
Gel: 0.8% agarose stained with 15 uL of SYBR Safe.
Ran for 1.5 hours at 100 volts.