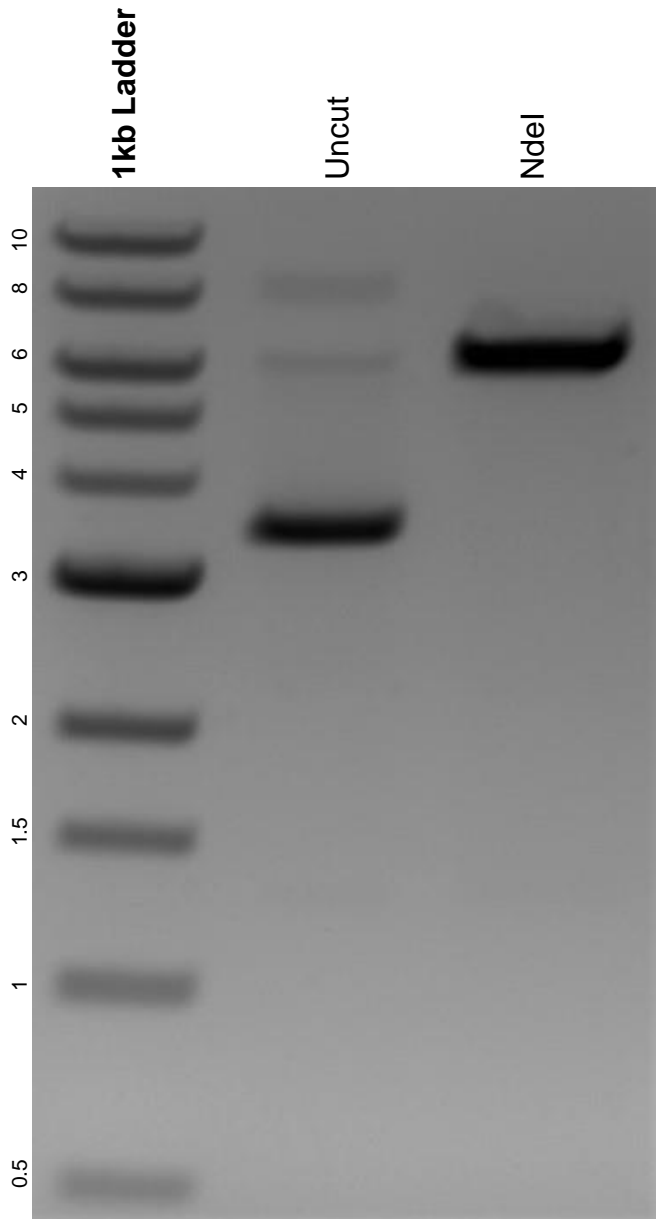


This gel depicts the NEB 1kb ladder and a digestion of the plasmid 4XCLEAR-luciferase reporter with the following enzymes: NdeI.

**Plasmid 66800:**  
4XCLEAR-luciferase reporter



DNA digested with NdeI single digest for **2 hours**.  
Gel: 0.8% agarose stained with 6 uL of ethidium bromide.  
Ran for 1.5 hours at 100 volts.