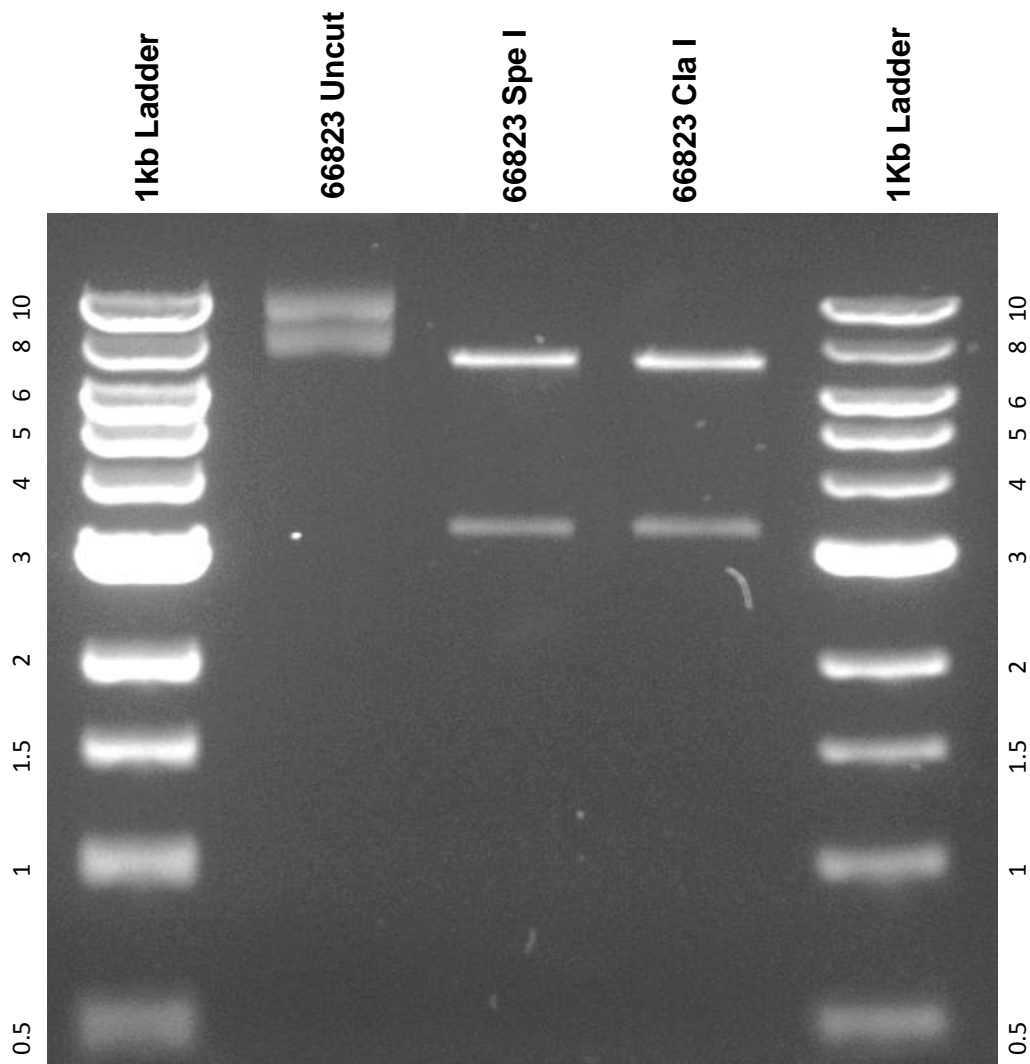


This gel depicts the NEB 1kb ladder and a digestion of the plasmid 66823 with the following enzymes Spe I and Cla I

Plasmid 66823: pDD282



DNA digested with Spe I single digest and Cla I single digest for **2 hours**.
Gel: 0.8% TAE and 4uL of ethidium bromide
Run for 1:5 hours at 100 volts